

LUOHE LETONE HYDRAULICS TECHNOLOGY CO.,LTD(Stock code:832225) is founded in April, 2003 located at No.88, Dongfang Hong Road, Luohe City, Henan Province, China. Total construction area is about 46 thousand square meters.Letone is a professional manufacturer of rubber hose and hose fitting with independent import and export rights, which engaged in the research, manufacturing and marketing.

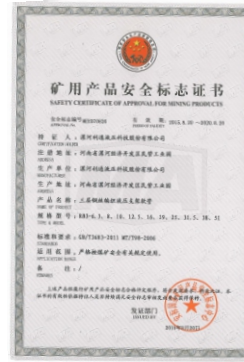
The company has a registered capital of 52 million Yuan and the total assets of 240 million Yuan.Annual production of various types of high, medium and low pressure hydraulic hose 15 million meters. Letone has six Germany Mayer wire weaving production line, one Italy OMA wire winding production line , six South Korea SEIJIN wire winding production line , two industrial hose production line, and two automatic mixing rubber production line.We have the ability to produce braided rubber hose 56 thousand meters as well as ultra high pressure steel wire spiral rubber hose 15 thousand meters per day.The company's main products are SUPER ARTERY, ARTERY, RIVULET, PIKES and other series of rubber hoses and most types of industrial hoses as well as PTFE Multifunctional hose ,API oilfield hose and fittings.Products are widely used in chemical, food, high-speed rail, medicine, construction, construction machinery, mining machinery, construction machinery, hydraulic machinery, wind power, oil drilling and other 21 fields.

Letone has 16 independent offices throughout the country, and the European subsidiary is established in Germany in 2015.Our products are exported to the United States, Italy, Spain, Russia and other more than 20 countries and regions.



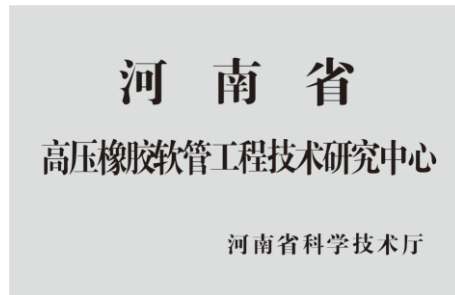
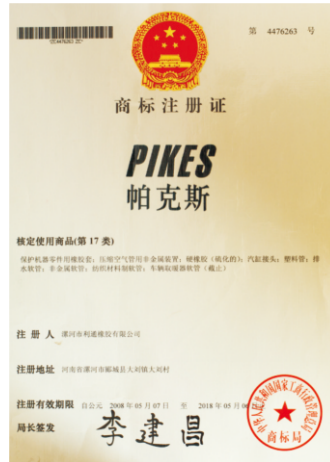
COMPANY HONOR

企业荣誉 持续创新，做液压管路系统市场领航者。



COMPANY HONOR

企业荣誉 持续创新，做液压管路系统市场领航者。



目录 Catalog

Compressed Air
压缩空气管

LT801	编织钢线空气管 Braided SteelWire Air Hose	1
LT802	600PSI高温耐油编织钢线空气管 600 PSI High Temperature–Oil Resistant Steel Braided Reinforced Air Hose	2
LT803	300PSI纺织线绳空气管 300 PSI Textile Cord “Air Drill” Hose	3
LT804	400PSI纺织线绳高强度矿用胶管 400 PSI Textile Cord “Heavy Duty” Mining Hose	4
LT805	150PSI高质量热吹风胶管 150 PSI High Quality Hot Air Blower Hose	5

Water Suction
吸排水管

LT901	150PSI EPDM橡胶通用吸水排水管 150 PSI EPDM General PurposeWater S & D Hose	6
LT902	SBR橡胶吸水排水管 SBR Water S & D Hose	7
LT903	150PSI EPDM橡胶可压扁型排水管 150 PSI EPDM Layflat Water Discharge Hose	8
LT904	150PSI SBR橡胶排水管 150 PSI SBR Water Discharge Hose	9
LT905	高压排水管 High Pressure Water Discharge Hose	10

Steam
蒸汽管

LT1001-A/	225PSI优质造纸厂/乳业冲洗软管—无喷嘴	
LT1001-B	225 PSI Premium PaperMill/Creamery Wash DownHose - No Nozzle	11
LT1002-A/	150PSI优质造纸厂/乳业冲洗软管--带锥形喷嘴	
LT1002-B	150 PSI Premium Paper Mill/Creamery Wash Down Hose With Tapered Nozzle	12
LT1003	75PSI散热器软管 75 PSI Radiator Hose	13
LT1004-A/	270PSI EPDM橡胶编织蒸汽管	
LT1004-B	270 PSI EPDM Braided Steam Hose	15
LT1005-A/	270PSI 氯化丁基编织蒸汽管	
LT1005-B	270 PSI Chlorobutyl Braided Steam Hose	16

 Food Transfer - FDA Liquid
食品管

LT1101	150PSI白色食品吸排管 150 PSI White Food S & D Hose	17
LT1101	150PSI灰色食品吸排管 150 PSI Grey Food S & D Hose	18
LT1103	240PSI食物和饮料吸排管—抗挤压 240 PSI Food & Beverage S & D Hose - CrushResistant	19
LT1104	150PSI饮用水输送管 150 PSI Potable Water Hose Hose is not NSF Approved	20
LT1105	150PSI食品排放管 150 PSI Food DischargeHose	21

LT1201	240PSI化学品输送管–XLPE Acid - Chemical S & D 240 PSI - XLPE	22
LT1202	240PSI化学品输送管 Acid - Chemical S & D 240 PSI - UHMWPE Meets FDA Requirements Suitable for use with DEF	23
LT1203	240PSI船舶排气管–USCG/SAE J1527 B2 Hard Wall Marine Exhaust Hose USCG/SAE J1527 B2	24
LT1204	船舶排气管SAE J2006 R1 Soft Wall Marine Exhaust Hose - SAE J2006 R1	26
LT1205	400PSI输送管 400 PSI Oil Rigger / Frack Discharge Hose	28
LT1206	400PSI输送管带SUPERTUFF外层 400 PSI Oil Rigger/Frack Discharge Hose with SUPERTUFF Cover	29
LT1207	150PSI波纹状油箱管 150 PSI Corrugated Oil Rigger/Oil Field–Frack Tank Hose	30
LT1208	150PSI油箱管 150 PSI Oil Rigger/Oil Field–Frack Tank Hose	31
LT1209	SAE 100 R4回油管 Flexor - SAE 100 R4 Oil Return Hose	32
LT1210	150PSI黑色石油吸排管 150 PSI Black Petroleum S & D Hose	33
LT1211	150PSI红色石油吸排管 150 PSI Red Petroleum S & D Hose	34
LT1212	150PSI波纹抗寒石油吸排管 150 PSI Corrugated Petroleum S & D - Arctic Hose	35

Chemical and Petroleum
**化学管
石油管**

LT1213	300PSI黑色石油燃料吸排管 300 PSI Black Fuel & Oil S & D Hose	36
LT1214	150PSI黑色生物燃油吸排管 150 PSI Black Biofuel Petroleum S & D Hose	37
LT1215	150PSI排油管 150 PSI Oil Discharge Hose	38
LT1216	150PSI热焦油沥青吸排管 150 PSI Hot Tar & Asphalt S & D Hose	39
LT1217	300PSI热焦油沥青敷料输送管 300 PSI Hot Tar & Asphalt Applicator Delivery Hose	40

Material Handling
物料管

LT1301	150PSI双层磨砂材料喷射管 150 PSI 2-Ply Abrasive Material Blast Hose	41
LT1302-A/ LT1302-B	150PSI双层磨砂材料喷射管 150 PSI 4-Ply Abrasive Material Blast Hose	42
LT1303	散食吸排管—FDA Bulk Food S & D Hose – FDA	43
LT1304	75PSI干散食排放管—FDA等级 75 PSI Dry Bulk Food Discharge Hose – FDA Grade	44
LT1305	散装材料吸排管 Bulk Material S & D Hose	45
LT1306	1275PSI 高性能钢钢筋混凝土泵软管 1275 PSI High Performance Steel – Reinforced Concrete Pumping Hose	46

LT1307-A/	600PSI 石膏混凝土管 (LT737AA系列仅限3英寸内径)	47
LT1307-B	600 PSI Plaster & Concrete Hose(Series T737AA for 3" ID)	

LT1308-A/	800PSI 石膏水泥浆混凝土管	48
LT1308-B	800 PSI Plaster, Grout & Concrete Hose	

LT1309	75PSI 轻质干粉输送管 75 PSI Light Weight Dry Powder Delivery Hose	49
--------	---	----

LT1310	75PSI 重型干粉输送管 75 PSI Heavy Weight Dry Powder Delivery Hose	50
--------	---	----

LT1401	1000PSI 编织MSHA矿用喷雾胶管 1000 PSI Braided MSHA Mine Spray Hose	51
--------	---	----

LT1402	300PSI 炉门冷却液软管 300 PSI Furnace Door Coolant Hose	52
--------	---	----

LT1403	混凝土输送管 Concrete placement hose	53
--------	-----------------------------------	----

LT1404	210°C蒸汽软管 Steam hose for 210°C	54
--------	-----------------------------------	----

LT1405	PTFE/HNBR高中低压多功能软管 KING HOSE PTFE/HNBR High and low pressure multifunctional hose	55
--------	--	----

LT1406	超高压多功能软管 Ultra high pressure multifunctional hose	56
--------	--	----

LT1407	API — — 7K API 7K Certificated Hose	57
--------	--	----

Specialty Hoses
专业软管

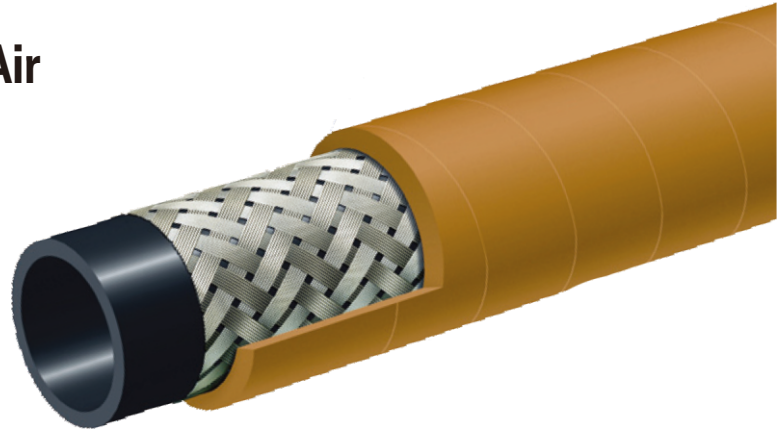
LT1408	API—16C API 16C Certificated Hose	58
LT1409	API—BOP Blow Out Preventer hydraulic Hose	59
LT1410	PTFE大口径多功能软管-KING HOSE PTFE large diameter Multifunctional hose	60
LT1501	橡胶下水道清洗软管 Sewer Cleaning Hoses	61
LT1502	超高压水喷射软管系列 ULTRA-HIGH PRESSURE WATER JETTING HOSE SERIES	62

压缩空气管 Compressed Air

LT801

编织钢线空气管

Braided SteelWire Air Hose



应用范围:

用在高压力的工作环境, 适用于矿业, 石场, 建筑业和其他工业等

外层:

黄色SBR橡胶, 耐磨, 耐氧化

加强层:

高张力编织钢线层

内层:

黑色挤出SBR橡胶, 耐油雾

工作压力:

恒定压力

40 Bar(600PSI): 1/2", 3/4", 1", 1 1/4", 1 1/2", 2"

31Bar (450PSI) : 2 1/2", 3", 4"

温度范围:

-30° C(-22° F)到+80° C(+176° F)

Applications:

High pressure air hose for heavy-duty use in mines, quarries, construction and industry.

Cover:

Yellow SBR-abrasion and ozone resistant-pin pricked.

Reinforcement:

High tensile steel cords-braided.

Tube:

Black Extruded SBR-resistant to oil mist.

Working Pressure:

Constant Pressure

40 Bar (600 PSI): 1/2", 3/4", 1", 1 1/4", 1 1/2", 2"

31 Bar (450 PSI): 2 1/2", 3", 4"

Temperature Range:

-22° F(-30° C) to 176° F(+80° C)

规格 Specifications

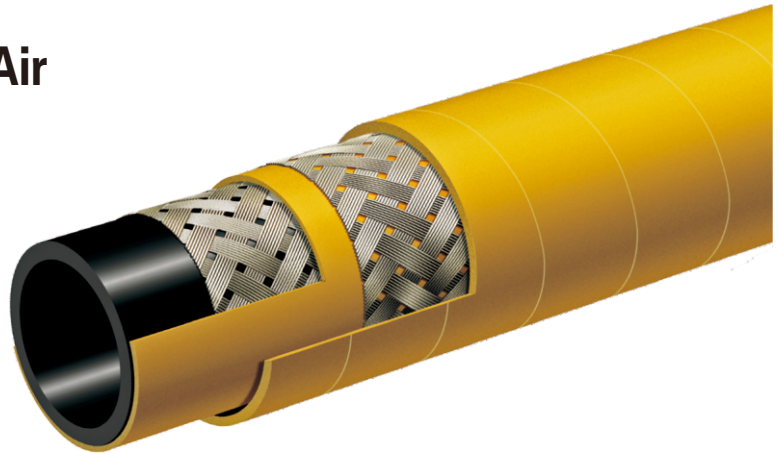
系列 Series	ID 内径 (in.)	ID 内径 (mm)	OD 外径 (in.)	OD 外径 (mm)	Max Rec.WP (PSI) 最大工作压力	Min.B.R 最小弯曲半径	Weight 重量 (kg/m)
LT801-050	1/2	13	0.87	22	600	21/2	0.42
LT801-075	3/4	19	1.10	28	600	4	0.55
LT801-100	1	25	1.34	34	600	5	0.70
LT801-125	1 1/4	32	1.65	42	600	6 1/2	1.07
LT801-150	1 1/2	38	1.89	48	600	7 1/2	1.28
LT801-200	2	51	2.52	64	600	10	1.99
LT801-250	2 1/2	63	3.03	77	450	12 1/2	2.44
LT801-300	3	76	3.54	90	450	15	2.90
LT801-400	4	102	4.65	118	450	20	5.16

压缩空气管 Compressed Air

LT802

600PSI高温耐油编织钢线空气管

600 PSI High Temperature-Oil Resistant Steel Braided Reinforced Air Hose



应用范围:

用在高压力和耐油的工作环境，适用于矿业，石场，具有耐用，使用寿命长，安全级别高的特点。

外层:

黄色SBR/NBR橡胶，耐磨，氧化，耐火以及芳香烃物质

加强层:

高张力编织钢线层

内层:

黑色挤出SBR橡胶，RMA等级A，耐油雾

工作压力:

恒定压力

40 Bar(600PSI)

温度范围:

-40° C(-40° F)到 +120° C(+242° F)

Applications:

High pressure air for mines and quarries. Designed for long lasting service and maximum safety in heavy duty applications where resistance to oil is required.

Cover:

Yellow SBR/NBR-abrasion, ozone, hydrocarbon and flame resistant-pin pricked.

Reinforcement:

High tensile steel wire braids.

Tube:

Black Extruded NBR (RMA Class A)-oil mist resistant.

Working Pressure:

Constant Pressure-40 Bar (600 PSI)

Temperature Range:

-40° F(-40° C) to 242° F(+120° C)

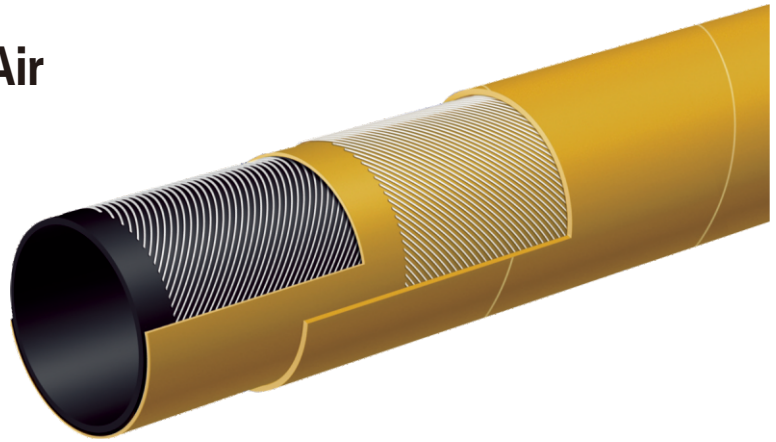
规格 Specifications							
系列 Series	ID 内径 (in.)	ID 内径 (mm)	OD外径 (IN.)	OD外径 (MM)	Max Rec.WP (PSI) 最大工作压力	Min.B.R 最小弯曲半径	Weight 重量 (kg/m)
LT802-200	2	51	2.52	64	600	10	2.28
LT802-250	2 1/2	63	3.03	77	600	12 1/2	2.87
LT802-300	3	76	3.54	90	600	15	3.54

压缩空气管 Compressed Air

LT803

300PSI纺织线绳空气管

300 PSI Textile Cord "Air Drill" Hose



应用范围:

适用于建筑业和矿业的高质量压缩空气管

外层:

黄色SBR橡胶, 耐磨, 抗氧化

加强层:

高张力缠绕纺织线绳

内层:

黑色SBR/NBR混合橡胶, 耐油雾

工作压力:

恒定压力

20 Bar(300PSI)

温度范围:

-30° C(-22° F)到 +80° C(+176° F)

Applications:

High quality air hose for mining and construction service.

Cover:

Yellow SBR-abrasion and ozone-resistant.

Reinforcement:

Spiralled, high tensile textile cords.

Tube:

Black SBR/NBR blend-oil mist resistant.

Working Pressure:

Constant Pressure-20 Bar (300 PSI)

Temperature Range:

-22° F(-30° C) to 176° F(+80° C)

规格 Specifications

系列 Series	ID 内径 (in.)	ID 内径 (mm)	OD 外径 (in.)	OD 外径 (mm)	Max Rec.WP (PSI) 最大工作压力	Weight 重量 (kg/m)
LT803-050	1/2	13	0.83	21	300	0.33
LT803-075	3/4	19	1.14	29	300	0.57
LT803-100	1	25	1.38	35	300	0.71
LT803-125	1 1/4	32	1.73	44	300	0.89
LT803-150	1 1/2	38	1.97	50	300	1.04
LT803-200	2	51	2.56	65	300	1.67
LT803-250	2 1/2	63	3.11	79	300	2.31
LT803-300	3	76	3.62	92	300	2.81
LT803-400	4	102	4.65	118	300	3.68

压缩空气管 Compressed Air

LT804

400PSI纺织线绳高强度矿用胶管

400 PSI Textile Cord "Heavy Duty"
Mining Hose



应用范围:

高质量的空气胶管适用于高强度和矿业应用。

外层:

绿色SBR橡胶，耐磨，耐氧化

加强层:

高张力缠绕纺织线绳

内层:

黑色SBR/NBR混合橡胶，耐油雾

工作压力:

恒定压力

27 Bar(400PSI)

温度范围:

-30° C(-22° F)到 +80° C(+176° F)

Applications:

High quality air hose for heavy duty and mining applications.

Cover:

Green SBR-abrasion and ozone-resistant.

Reinforcement:

Spiralled, high tensile textile cords.

Tube:

Black SBR/NBR blend-oil mist resistant.

Working Pressure:

Constant Pressure-27 Bar (400 PSI)

Temperature Range:

-22° F(-30° C) to 176° F(+80° C)

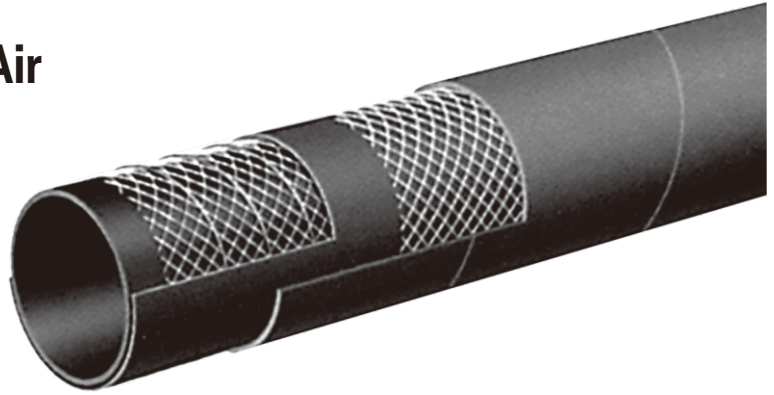
规格 Specifications						
系列 Series	ID 内径 (in.)	ID 内径 (mm)	OD 外径 (in.)	OD 外径 (mm)	Max Rec.WP (PSI) 最大工作压力	Weight 重量 (kg/m)
LT804-075	3/4	19	1.14	29	400	0.57
LT804-100	1	25	1.38	35	400	0.71
LT804-125	1 1/4	32	1.73	44	400	0.92
LT804-150	1 1/2	38	1.97	50	400	1.06
LT804-200	2	51	2.56	65	400	1.70

压缩空气管 Compressed Air

LT805

150PSI高质量热吹风胶管

150 PSI High Quality Hot Air Blower Hose



应用范围:

适用于大型物料输送装置上空气压缩机和大型石油气缸间的热空气交换

外层:

黄色EPDM橡胶, 耐磨, 抗氧化, 耐高温

加强层:

高张力缠绕纺织线绳以及高灵活度螺旋钢线

内层:

黑色EPDM橡胶, 耐热

工作压力:

恒定压力

10 Bar(150PSI)

温度范围:

-40° C(-40° F)到+180° C(+350° F)

Applications:

Hot air transfer between the air compressor and dry bulk tank on bulk material carriers.

Cover:

Black EPDM-heat, abrasion and ozone resistant.

Reinforcement:

Spiralled high tensile textile cords and 4 highly flexible steel helix wires.

Tube:

Black EPDM-heat-resistant.

Working Pressure:

Constant Pressure-10 Bar (150 PSI)

Temperature Range:

-40° F(-40° C) to 350° F(+180° C)

规格 Specifications

系列 Series	ID 内径 (in.)	ID 内径 (mm)	OD 外径 (in.)	OD 外径 (mm)	Max Rec.WP (PSI) 最大工作压力	Vacuum HG 真空度 (in.)	Min.B.R 最小弯曲半径	Weight 重量 (kg/m)
LT805-200	2	51	2.48	63	150	30	6	1.50
LT805-300	3	76	3.54	90	150	27	9	2.38
LT805-400	4	102	4.65	116	150	27	12	3.32

吸排管 Water Suction

LT901

150PSI EPDM橡胶通用吸水排水管

150 PSI EPDM General Purpose Water S & D Hose



FOR APPLICATIONS INVOLVING INDUSTRIAL ACID CHEMICALS AND ALCOHOLS, PLEASE REFER TO T5050G AND T5090E CHEMICAL HOSES

应用范围：

在排放灌溉、建筑、化肥和套索酸解决方案中的无腐蚀性液体的抽吸和排放

外层：

黑色EPDM橡胶，耐磨，耐腐蚀

加强层：

高张力缠绕纺织线绳以及高灵活度螺旋钢丝

内层：

黑色EPDM橡胶

工作压力：

恒定压力

10 Bar (150 PSI)

温度范围：

-30° C (-22° F) 到 +80° C (+176° F)

Applications:

Suction and discharge of non-corrosive liquids for irrigation, construction, fertilizers and lasso acid solutions.

Cover:

Black EPDM—abrasion and ozone resistant.

Reinforcement:

Spiralled high tensile textile cords and highly flexible steel helix wire/wires.

Tube:

Black EPDM.

Working Pressure:

Constant Pressure—10 Bar (150 PSI)

Temperature Range:

-22° F (-30° C) to 176° F (+80° C)

规格 Specifications

系列 Series	ID 内径 (in.)	ID 内径 (mm)	OD 外径 (in.)	OD 外径 (mm)	Max Rec.WP (PSI) 最大工作压力	Vacuum HG 真空度 (in.)	Min.B.R 最小弯曲半径	Weight 重量 (kg/m)
LT901-100	1	25	1.38	35	150	30	4	0.70
LT901-125	1 1/4	32	1.65	42	150	30	5	0.83
LT901-150	1 1/2	38	1.89	48	150	30	6	0.95
LT901-200	2	51	2.40	61	150	30	8	1.25
LT901-250	2 1/2	63	2.95	75	150	27	10	1.79
LT901-300	3	76	3.46	88	150	27	12	2.14
LT901-350	3 1/2	90	4.02	102	150	27	14	2.71
LT901-400	4	102	4.49	114	150	27	16	3.02
LT901-500	5	127	5.55	141	150	24	25	4.73
LT901-600	6	152	6.54	166	150	24	30	5.97
LT901-800	8	203	8.70	221	150	21	40	9.81
LT901-1000	10	254	10.71	272	150	18	50	13.44
LT901-1200	12	305	12.87	327	150	18	61	18.66

吸排管 Water Suction

LT902

SBR橡胶吸水排水管

SBR Water S & D Hose



应用范围:

在排放灌溉、建筑中的吸水排水应用

外层:

黑色SBR橡胶, 耐磨, 耐腐蚀

加强层:

高张力缠绕纺织线绳以及高灵活度螺旋钢线

内层:

黑色SBR橡胶

工作压力:

恒定压力

5Bar(75PSI)

温度范围:

-30° C(-22° F)到 +80° C(+176° F)

Applications:

Suction and discharge of water for irrigation and construction.

Cover:

Black SBR—ozone and abrasion—resistant.

Reinforcement:

Spiralled high tensile textile cords and flexible steel helix wires.

Tube:

Black SBR.

Working Pressure:

Constant Pressure—5 Bar (75 PSI)

Temperature Range:

-22° F(-30° C) to 176° F(+80° C)

规格 Specifications

系列 Series	ID 内径 (in.)	ID 内径 (mm)	OD 外径 (in.)	OD 外径 (mm)	Max Rec.WP (PSI) 最大工作压力	Vacuum HG 真空度 (in.)	Min.B.R 最小弯曲半径	Weight 重量 (kg/m)
LT902-600	6	152	6.54	166	75	24	30	6.15
LT902-800	8	203	8.70	221	75	21	40	10.51

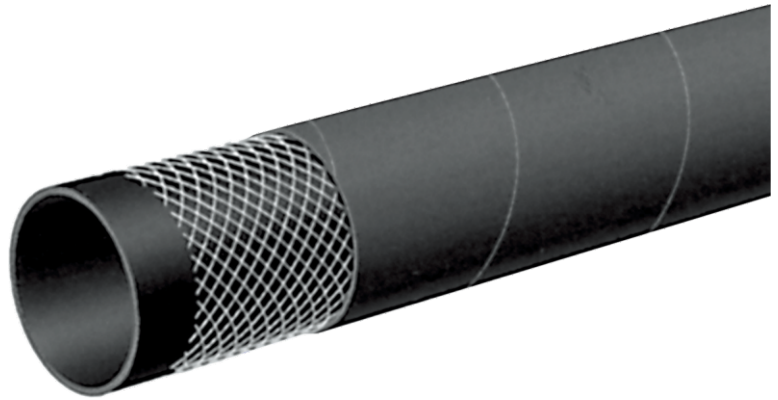
吸排管 Water Suction

LT903

150PSI EPDM橡胶可压扁型排水管

150 PSI EPDM Layflat Water Discharge Hose

FOR APPLICATIONS INVOLVING INDUSTRIAL ACID CHEMICALS AND ALCOHOLS, PLEASE REFER TO T5050G AND T5090E CHEMICAL HOSES



应用范围:

高压, 150PSI可压扁型排水管适用于通用的工业建筑和灌溉

外层:

黑色EPDM橡胶, 耐磨, 耐氧化

加强层:

高张力纺织线绳

内层:

黑色EPDM橡胶

工作压力:

恒定压力

10Bar(150PSI)

温度范围:

-30° C(-22° F)到 +80° C(+176° F)

Applications:

High pressure, 150 PSI lay flat type hose for general industrial construction and irrigation.

Cover:

Black EPDM—abrasion and ozone—resistant.

Reinforcement:

High tensile textile cords.

Tube:

Black EPDM.

Working Pressure:

Constant Pressure—10 Bar (150 PSI)

Temperature Range:

-22° F(-30° C) to 176° F(+80° C)

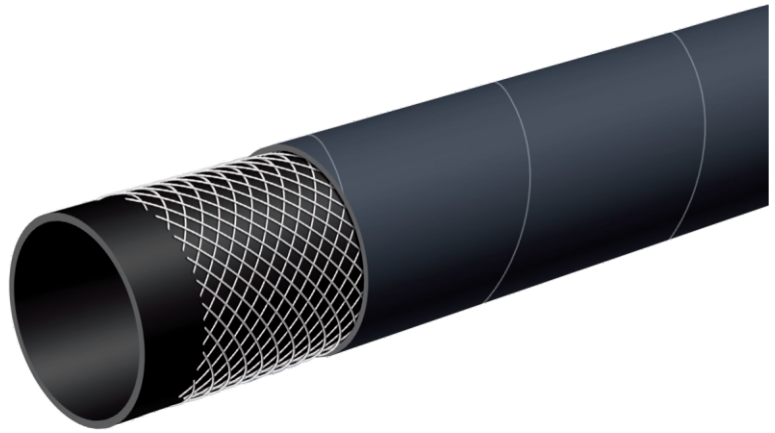
规格 Specifications						
系列 Series	ID 内径 (in.)	ID 内径 (mm)	OD 外径 (in.)	OD 外径 (mm)	Max Rec.WP (PSI) 最大工作压力	Weight 重量 (kg/m)
LT903-150	1 1/2	38	1.81	46	150	0.55
LT903-200	2	51	2.32	59	150	0.74
LT903-250	2 1/2	63	2.80	71	150	0.89
LT903-300	3	76	3.31	84	150	1.28
LT903-400	4	102	4.33	110	150	1.77
LT903-600	6	152	6.38	162	150	2.98
LT903-662	65/8	168	7.01	178	150	3.23
LT903-800	8	203	8.46	215	150	4.20
LT903-1000	10	254	10.63	270	150	7.60
LT903-1200	12	305	12.56	319	150	8.82

吸排管 Water Suction

LT904

150PSI SBR橡胶排水管

150 PSI SBR Water Discharge Hose



应用范围:

建筑和灌溉使用的排水管

外层:

黑色SBR橡胶, 耐磨, 耐腐蚀

加强层:

高张力纺织线绳

内层:

黑色SBR橡胶

工作压力:

恒定压力

10Bar(150PSI)

温度范围:

-30° C(-22° F)到 +80° C(+176° F)

Applications:

Water discharge hose for construction and irrigation.

Cover:

Black SBR - abrasion and ozone-resistant.

Reinforcement:

High tensile textile cords.

Tube:

Black SBR.

Working Pressure:

Constant Pressure - 10 Bar (150 PSI)

Temperature Range:

-22° F (-30° C) to 176° F (+80° C)

规格 Specifications

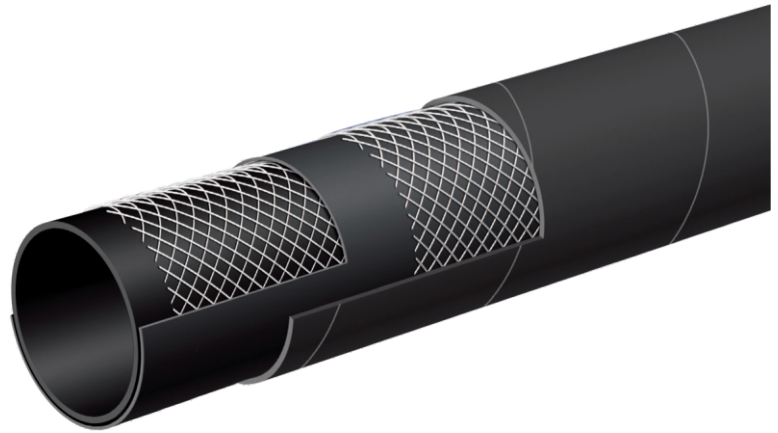
系列 Series	ID 内径 (in.)	ID 内径 (mm)	OD 外径 (in.)	OD 外径 (mm)	Max Rec.WP (PSI) 最大工作压力	Weight 重量 (kg/m)
LT904-150	1 1/2	38	1.89	48	150	0.98
LT904-200	2	51	2.40	61	150	1.29
LT904-300	3	76	3.46	88	150	2.29
LT904-400	4	102	4.49	114	150	3.10
LT904-600	6	152	6.54	166	150	4.66
LT904-800	8	203	8.62	219	150	6.90

吸排管 Water Suction

LT905

高压排水管

High Pressure Water Discharge Hose



应用范围:

重型排水管, 适用于作业条件苛刻和高压的工作环境

外层:

黑色SBR橡胶, 耐磨, 抗氧化

加强层:

高张力纺织线绳

内层:

黑色SBR/NBR混合橡胶

工作压力:

恒定压力

20Bar(300PSI)

温度范围:

-30° C(-22° F)到 +80° C(+176° F)

Applications:

Heavy duty water discharge hose where tougher operating conditions exist and high pressures are needed.

Cover:

Black SBR-abrasion and ozone-resistant.

Reinforcement:

High tensile textile cords.

Tube:

Black SBR/NBR blend.

Working Pressure:

Constant Pressure-20 Bar (300 PSI)

Temperature Range:

-22° F(-30° C) to 176° F(+80° C)

规格 Specifications						
系列 Series	ID 内径 (in.)	ID 内径 (mm)	OD 外径 (in.)	OD 外径 (mm)	Max Rec.WP (PSI) 最大工作压力	Weight 重量 (kg/m)
LT905-150	1 1/2	38	1.97	50	300	1.03
LT905-200	2	51	2.56	65	300	1.32
LT905-250	2 1/2	63	3.11	79	300	2.29
LT905-300	3	76	3.62	92	300	2.78
LT905-400	4	102	4.65	118	300	3.63
LT905-600	6	152	6.69	170	300	6.16

热水管 Hot Water

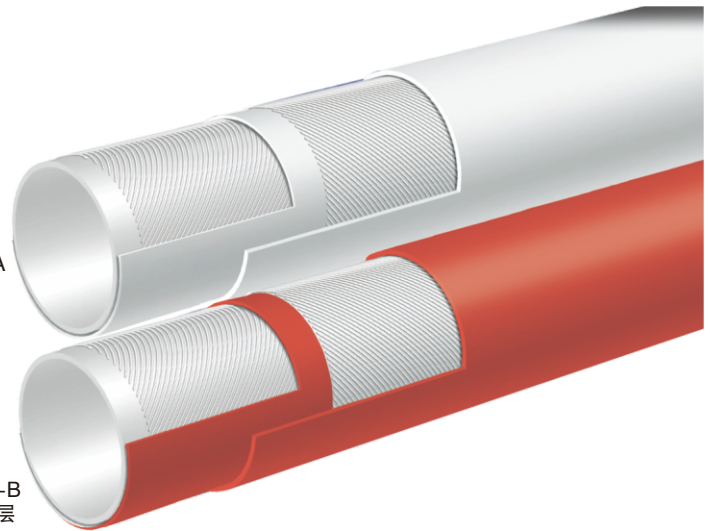
LT1001-A/LT1001-B

225PSI优质造纸厂/ 乳业冲洗软管—无喷嘴

225 PSI Premium PaperMill/
Creamery Wash DownHose - No Nozzle

LT906-A
白色外层

LT906-B
红色外层



应用范围:

适用于一般的冲洗应用, 使用热水或低压饱和蒸汽
在加工厂设施以及食品和乳制品厂中使用

外层:

红色EPDM橡胶, 耐磨, 抗氧化, 耐热
白色EPDM橡胶, 耐磨, 抗氧化, 耐热

加强层:

高张力纺织线绳

内层:

白色EPDM橡胶

工作压力:

恒定压力

15Bar(225PSI)

温度范围:

-40° C(-40° F)到 +165° C(+330° F)

Applications:

For general wash down service, using hot water or low pressure saturated steam in processing plants and facilities and in food and dairy plants.

Cover:

Red EPDM—heat, abrasion and ozone resistant.
White EPDM—heat, abrasion and ozone resistant.

Reinforcement:

High tensile textile cords.

Tube:

White EPDM.

Working Pressure:

Constant Pressure—15 Bar (225 PSI)

Temperature Range:

-40° F(-40° C) to 330° F(+165° C)

规格 Specifications

系列 Series	ID 内径 (in.)	ID 内径 (mm)	OD 外径 (in.)	OD 外径 (mm)	Max Rec.WP (PSI) 最大工作压力	Weight 重量 (kg/m)
LT1001-A-050	1/2	13	0.91	23	225	0.40
LT1001-A-062	5/8	16	1.02	26	225	0.46
LT1001-A-075	3/4	19	1.22	31	225	0.65
LT1001-A-100	1	25	1.46	37	225	0.80
LT1001-B-075	3/4	19	1.22	31	225	0.65
LT1001-B-100	1	25	1.46	37	225	0.80

热水管 Hot Water

LT1002-A/LT1002-B

150PSI优质造纸厂/乳业 冲洗软管--带锥形喷嘴

150 PSI Premium Paper Mill/Creamery
Wash Down Hose With Tapered Nozzle

LT907-A
白色外层

LT907-B
红色外层



应用范围:

适用于一般的冲洗应用, 使用热水或冷水在造纸厂以及食品和乳制品厂中使用

外层:

白色或绿色EPDM橡胶, 耐磨, 抗氧化, 耐热

加强层:

高张力纺织线绳

内层:

白色EPDM橡胶

工作压力:

恒定压力

10Bar(150PSI)

温度范围:

-40° C(-40° F)到 +120° C(+248° F)

Applications:

For general wash down service, using hot and cold water in paper mills and in food and dairy plants.

Cover:

White or green EPDM-heat, abrasion and ozone resistant.

Reinforcement:

High tensile textile cords.

Tube:

White EPDM.

Working Pressure:

Constant Pressure-10 Bar (150 PSI)

Temperature Range:

-40° F (-40° C) to 248° F (+120° C)

*Tapered Nozzle Hole Size

3/4" and 1" ID.....3/8"

1 1/4" ID.....1/2"

1 1/2" ID.....5/8"

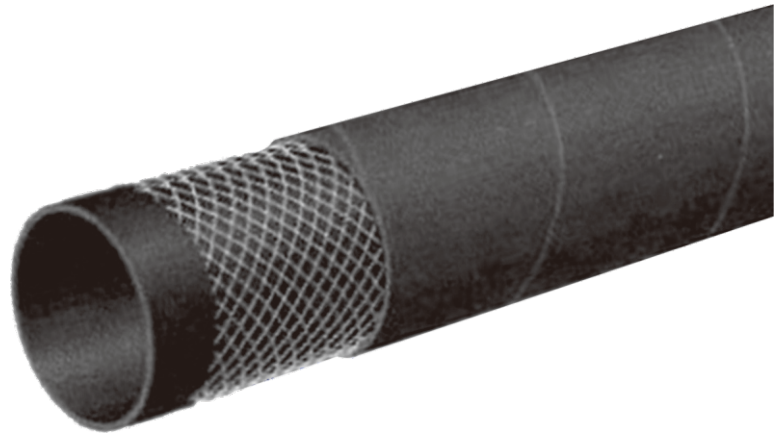
规格 Specifications						
系列 Series	ID 内径 (in.)	ID 内径 (mm)	OD外径 (in.)	OD外径 (mm)	Max Rec.WP (PSI) 最大工作压力	Weight 重量 (kg/m)
LT1002A/B-075	3/4	19	1.22	31	150	0.65
LT1002A/B-100	1	25	1.46	37	150	0.80
LT1002A/B-125	1 1/4	32	1.81	46	150	1.16
LT1002A/B-150	1 1/2	38	2.05	52	150	1.35

散热器软管 Hot Water

LT1003

75PSI散热器软管

75 PSI Radiator Hose



应用范围:

散热器软管

外层:

黑色EPDM橡胶, 耐磨, 抗氧化, 耐热

加强层:

高张力纺织线绳

内层:

黑色EPDM橡胶

工作压力:

恒定压力

5Bar(75PSI)

温度范围:

-40° C(-40° F)到 +120° C(+248° F)

Applications:

Radiator hose.

Cover:

Black EPDM-heat, abrasion and ozone resistant.

Reinforcement:

High tensile textile cords.

Tube:

Black EPDM.

Working Pressure:

5 Bar (75 PSI)

Temperature Range:

-40° F(-40° C) to 248° F(+120° C)

规格 Specifications

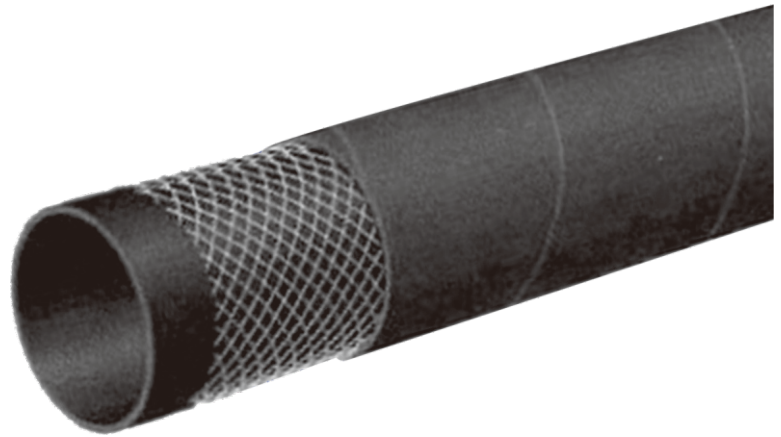
系列 Series	ID 内径 (in.)	ID 内径 (mm)	OD 外径 (in.)	OD 外径 (mm)	Max Rec.WP (PSI) 最大工作压力	Available Length 长度	Weight 重量 (kg/m)
LT1003-050X12.6	1/2	13	0.83	21	75	12'6" Coil	0.28
LT1003-050X200	1/2	13	0.83	21	75	200' Coil	0.28
LT1003-062X12.6	5/8	16	0.94	24	75	12'6" Coil	0.33
LT1003-062X200	5/8	16	0.94	24	75	200' Coil	0.33
LT1003-071X12.6	11/16	18	1.02	26	75	12'6" Coil	0.36
LT1003-071X200	11/16	18	1.02	26	75	200' Coil	0.36
LT1003-078X12.6	13/16	20	1.10	28	75	12'6" Coil	0.39
LT1003-078X200	13/16	20	1.10	28	75	200' Coil	0.39
LT1003-087X12.6	7/8	22	1.18	30	75	12'6" Coil	0.42
LT1003-087X200	7/8	22	1.18	30	75	200' Coil	0.42
LT1003-100X12.6	1	25	1.30	33	75	12'6" Coil	0.48
LT1003-100X200	1	25	1.30	33	75	200' Coil	0.48
LT1003-112X12.6	11/8	28	1.42	36	75	12'6" Coil	0.51
LT1003-112X200	11/8	28	1.42	36	75	200' Coil	0.51
LT1003-118X12.6	13/16	30	1.50	38	75	12'6" Coil	0.55
LT1003-118X200	1 3/16	30	1.50	38	75	200' Coil	0.55

散热器软管 Hot Water

LT1003

75PSI散热器软管

75 PSI Radiator Hose



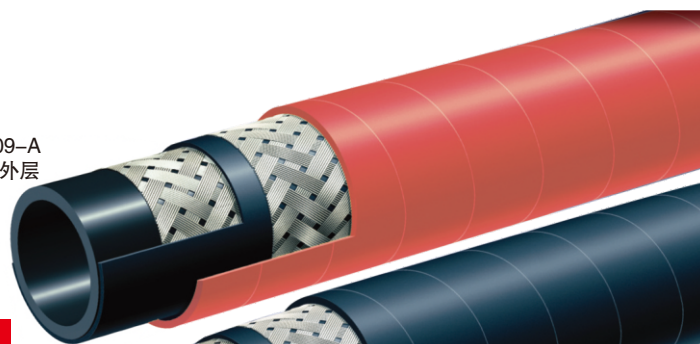
规格 Specifications

系列 Series	ID 内径 (in.)	ID 内径 (mm)	OD 外径 (in.)	OD 外径 (mm)	Max Rec.WP (PSI) 最大工作压力	Available Length 长度	Weight 重量 (kg/m)
LT1003-125X12.6	11/4	32	1.57	40	75	12'6" Coil	0.58
LT1003-125X200	11/4	32	1.57	40	75	200' Coil	0.58
LT1003-137X12.6	13/8	35	1.69	43	75	12'6" Coil	0.62
LT1003-137X200	13/8	35	1.69	43	75	200' Coil	0.62
LT1003-150X12.6	11/2	38	1.89	48	75	12'6" Coil	0.85
LT1003-150X200	11/2	38	1.89	48	75	200' Coil	0.85
LT1003-157X12.6	19/16	40	1.97	50	75	12'6" Coil	0.89
LT1003-157X200	19/16	40	1.97	50	75	200' Coil	0.89
LT1003-162X12.6	15/8	42	2.05	52	75	12'6" Coil	0.94
LT1003-162X200	15/8	42	2.05	52	75	200' Coil	0.94
LT1003-175X12.6	13/4	45	2.17	55	75	12'6" Coil	0.98
LT1003-175X200	13/4	45	2.17	55	75	200' Coil	0.98
LT1003-189X12.6	17/8	48	2.28	58	75	12'6" Coil	1.04
LT1003-189X200	1 7/8	48	2.28	58	75	200' Coil	1.04
LT1003-200X12.6	2	51	2.40	61	75	12'6" Coil	1.12
LT1003-200X200	2	51	2.40	61	75	200' Coil	1.12
LT1003-218X12.6	23/16	55	2.56	65	75	12'6" Coil	1.19
LT1003-225X12.6	21/4	57	2.64	67	75	12'6" Coil	1.22
LT1003-238X12.6	23/8	60	2.76	70	75	12'6" Coil	1.28
LT1003-250X12.6	21/2	63	2.87	73	75	12'6" Coil	1.34
LT1003-275X12.6	23/4	70	3.15	80	75	12'6" Coil	1.44
LT1003-300X12.6	3	76	3.39	86	75	12'6" Coil	1.55
LT1003-315X12.6	31/8	80	3.54	90	75	12'6" Coil	1.64
LT1003-354X12.6	39/16	90	4.02	102	75	12'6" Coil	2.02
LT1003-400X12.6	4	102	4.49	114	75	12'6" Coil	2.26
LT1003-450X12.6	41/2	116	5.00	127	75	12'6" Coil	2.51
LT1003-500X12.6	5	127	5.55	141	75	12'6" Coil	3.21

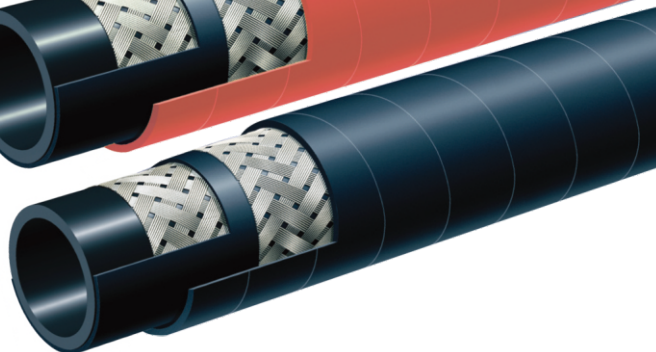
蒸汽管 Steam

LT1004-A/LT1004-B 270PSI EPDM橡胶编织蒸汽管 270 PSI EPDM Braided Steam Hose

LT909-A
红色外层



LT909-B
黑色外层



Warning

Handling steam is very hazardous. If it is not properly controlled it can cause property damage, injury or even death. Selection for the proper application, usage, and maintenance will not only increase hose life but will insure safe operation for the user.

警告: 处理蒸汽是非常危险的, 如果控制不当, 可导致财产损失, 受伤甚至死亡。选择适当的应用, 使用和维护, 不仅可以增加胶管的寿命, 还可以确保操作者的安全。

应用范围:

转移最大工作压力和温度在270PSI和430° F(+220° C)的饱和蒸汽
使用过热蒸汽将缩短软管寿命, 每次使用后的正常的软管排水将增加使用寿命。
如果存在洗涤剂或油, 不推荐适用于冲洗应用。

外层:

红色或黑色EPDM橡胶, 耐热, 表面布纹, 采用针孔技术

加强层:

高张力钢丝编织层

内层:

黑色EPDM橡胶, 耐热
不为蒸汽清洁使用

工作压力:

恒定压力

18Bar(270PSI)

温度范围:

-40° C(-40° F)到+220° C(+430° F)

Applications:

The transfer of saturated steam up to 270 PSI AND 430° F (+220° C).

- ★ **Use with superheated steam will shorten hose life. Proper draining of steam hose after each use will increase service life.**
- ★ **Not recommended for washdown applications where detergent or oils are present.**

Cover:

Red or black EPDM-heat-resistant. Wrapped cover fabric impression. Pin-pricked cover to allow venting.

Reinforcement:

High tensile steel wire braids.

Tube:

Black extruded EPDM-heat-resistant.

Not for steam cleaner use.

Working Pressure:

Constant Pressure-18 Bar (270 PSI)

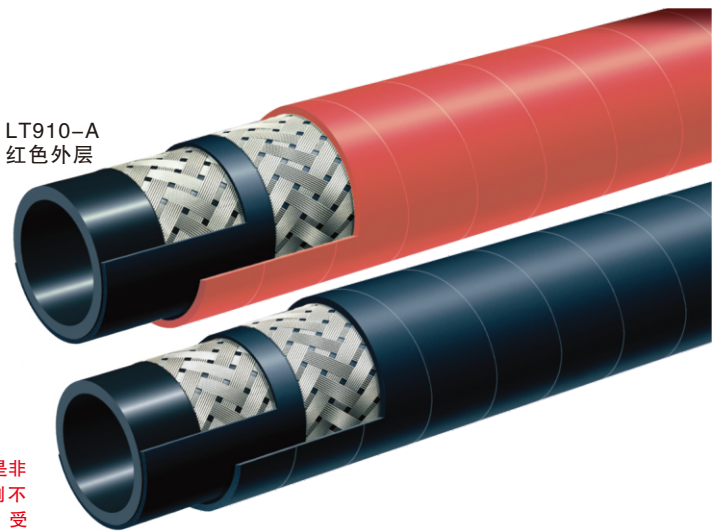
Temperature Range:

-40° F (-40° C) to 430° F (+220° C)

规格 Specifications							
系列 Series	ID 内径 (in.)	ID 内径 (mm)	OD 外径 (in.)	OD 外径 (mm)	Max Rec.WP (PSI) 最大工作压力	Min.B.R 最小弯曲半径	Weight 重量 (kg/m)
LT1004A/B-050	1/2	13	0.91	23	270	5	0.42
LT1004A/B-075	3/4	19	1.22	31	270	7 1/2	0.77
LT1004A/B-100	1	25	1.50	38	270	10	0.89

蒸汽管 Steam

LT1005-A/LT1005-B 270PSI 氯化丁基编织蒸汽管 270 PSI Chlorobutyl Braided Steam Hose

 LT910-A
红色外层

 LT910-B
黑色外层

Warning

Handling steam is very hazardous. If it is not properly controlled it can cause property damage, injury or even death. Selection for the proper application, usage, and maintenance will not only increase hose life but will insure safe operation for the user.

警告：处理蒸汽是非常危险的，如果控制不当，可导致财产损失，受伤甚至死亡。选择适当的应用，使用和维护，不仅可以增加胶管的寿命，还可以确保操作者的安全。

应用范围：

转移最大工作压力和温度在270PSI和430° F (+220° C)的饱和蒸汽和过热蒸汽，适用于造船厂，化工厂和工业应用。

每次使用后的正常的软管排水将增加使用寿命。如果存在洗涤剂或油，不推荐适用于冲洗应用。

外层：

红色或黑色EPDM橡胶，耐热，表面布纹，采用针孔技术

加强层：

高张力钢丝编织层

内层：

黑色CIIR橡胶，耐热
不为蒸汽清洁使用

工作压力：

恒定压力

18Bar(270PSI)

温度范围：

-40° C(-40° F)到 +220° C(+430° F)

Applications:

The transfer of saturated and superheated steam up to 270 PSI and max 430° F (+220° C) in shipyards, chemical plants and industrial applications.

- ★ **Proper draining of steam hose after each use will increase service life.**
- ★ **Not recommended for washdown applications where detergent or oils are present.**

Cover:

Red or black EPDM-heat-resistant. Wrapped cover fabric impression. Pin-pricked cover to allow venting.

Reinforcement:

High tensile steel wire braids.

Tube:

Black extruded CIIR-heat-resistant.

Not for steam cleaner use.

Working Pressure:

Constant Pressure-18 Bar (270 PSI)

Temperature Range:

-40° F(-40° C) to 430° F(+220° C)

规格 Specifications

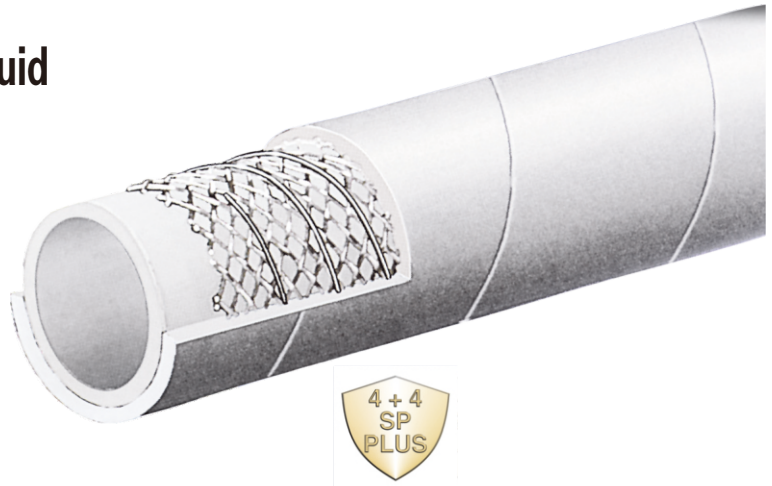
系列 Series	ID 内径 (in.)	ID 内径 (mm)	OD 外径 (in.)	OD 外径 (mm)	Max Rec.WP (PSI) 最大工作压力	Min.B.R 最小弯曲半径	Weight 重量 (kg/m)
LT1005A/B-050	1/2	13	0.91	23	270	5	0.43
LT1005A/B-075	3/4	19	1.22	31	270	7 1/2	0.79
LT1005A/B-100	1	25	1.50	38	270	10	0.92
LT1005A/B-125	1 1/4	32	1.81	46	270	12 1/2	1.32
LT1005A/B-150	1 1/2	38	2.05	52	270	15	1.44
LT1005A/B-200	2	51	2.64	67	270	20	2.14

食品管 Food Transfer - FDA Liquid

LT1101

150PSI白色食品吸排管

150 PSI White Food S & D Hose



应用范围:

液体, 脂肪, 油腻食品和酒精饮料 (最大75酒精度) 的吸入和排出。

软管可以用5%的苏打水消毒。

不推荐用于干磨料。

外层:

白色NBR/PVC橡胶, 耐磨, 耐氧化, 抗油

加强层:

高张力缠绕纺织线绳以及4高灵活度螺旋钢线

内层:

白色NBR橡胶, 符合FDA以及3A要求。

工作压力:

恒定压力

10Bar(150PSI)

温度范围:

-30° C(-22° F)到 +80° C(+176° F)

Applications:

Liquid, fatty, oily food and alcoholic beverage (max 75 proof) suction and discharge.

★ **Hose may be sterilized with 5% soda solution.**

Not recommended for dry abrasive materials.

Cover:

White NBR/PVC—abrasion, ozone and oil resistant.

Reinforcement:

Spiralled high tensile textile cords, and 4 highly flexible steel helix wires.

Tube:

White NBR. Meets FDA and 3A requirements.

Working Pressure:

Constant Pressure—10 Bar (150 PSI)

Temperature Range:

-22° F (-30° C) to 176° F (+80° C)

规格 Specifications

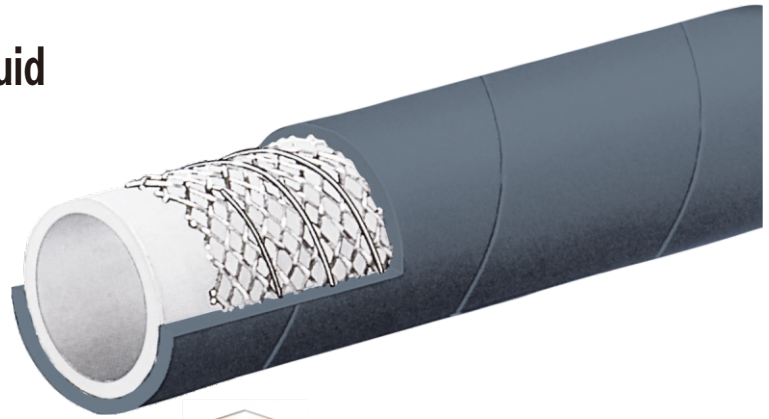
系列 Series	ID 内径 (in.)	ID 内径 (mm)	OD 外径 (in.)	OD 外径 (mm)	Max Rec.WP (PSI) 最大工作压力	Vacuum HG 真空度 (in.)	Min.B.R 最小弯曲半径	Weight 重量 (kg/m)
LT1101-100	1	25	1.46	37	150	30	3	0.91
LT1101-150	1 1/2	38	1.97	50	150	30	4 1/2	1.25
LT1101-200	2	51	2.48	63	150	30	6	1.61
LT1101-300	3	76	3.46	88	150	27	9	2.54
LT1101-400	4	102	4.57	116	150	27	12	3.51

食品管 Food Transfer - FDA Liquid

LT1102

150PSI灰色食品吸排管

150 PSI Grey Food S & D Hose



应用范围:

液体, 脂肪, 油腻食品和酒精饮料 (最大75酒精度) 的吸入和排出。

软管可以用5%的苏打水消毒。

不推荐用于干磨料。

外层:

灰色NBR/PVC橡胶, 耐磨, 抗氧化, 抗油

加强层:

高张力缠绕纺织线绳以及4高灵活度螺旋钢线

内层:

白色NBR橡胶, 符合FDA以及3A要求。

工作压力:

恒定压力

10Bar(150PSI)

温度范围:

-30° C(-22° F)到 +80° C(+176° F)

Applications:

Liquid, fatty, oily food and alcoholic beverage (max 75 proof) suction and discharge.

★ **Hose may be sterilized with 5% soda solution.**

Not recommended for dry abrasive materials.

Cover:

Grey NBR/PVC—abrasion, ozone and oil resistant.

Reinforcement:

Spiralled high tensile textile cords, and 4 highly flexible steel helix wires.

Tube:

White NBR. Meets FDA and 3A requirements.

Working Pressure:

Constant Pressure—10 Bar (150 PSI)

Temperature Range:

-22° F (-30° C) to 176° F (+80° C)

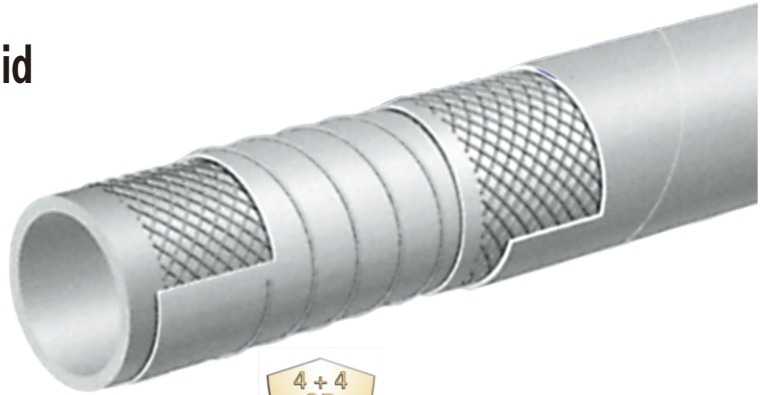
规格 Specifications								
系列 Series	ID 内径 (in.)	ID 内径 (mm)	OD 外径 (in.)	OD 外径 (mm)	Max Rec.WP (PSI) 最大工作压力	Vacuum HG 真空度 (in.)	Min.B.R 最小弯曲半径	Weight 重量 (kg/m)
LT1102-200	2	51	2.48	63	150	30	6	1.61
LT1102-300	3	76	3.46	88	150	27	6	2.54

食品管 Food Transfer - FDA Liquid

LT1103

240PSI食物和饮料吸排管 —抗挤压

240 PSI Food & Beverage S & D Hose
- CrushResistant



应用范围:

食物和酒精饮料的吸排，特别设计适用于红酒，啤酒以及烈性酒（不高于酒精度95）软管可以用5%的苏打水或用蒸汽在226° F (+130° C) 温度下进行30分钟的消毒不推荐用于干磨料。

外层:

白色EPDM橡胶，耐磨，耐氧化

加强层:

高张力纺织线绳以及螺旋钢丝加强

内层:

白色无毒CIIR橡胶，符合FDA以及3A要求。

工作压力:

恒定压力

16Bar(240PSI)

温度范围:

-30° C(-22° F)到 +80° C(+176° F)

Applications:

Food and alcoholic beverage suction and discharge. Specially designed for wine, beer and spirits, up to 95 proof.

- ★ **Hose may be sterilized with steam at 226° F (+130° C) for 30 minutes or with 5% soda solution.**

Not recommended for dry abrasive materials.

Cover:

White EPDM—abrasion and ozone resistant.

Reinforcement:

High tensile textile cords with embedded PET helix.

Tube:

White nontoxic CIIR. Meets FDA and 3A requirements.

Working Pressure:

Constant Pressure—16 Bar (240 PSI)

Temperature Range:

-22° F(-30° C) to 176° F(+80° C)

规格 Specifications

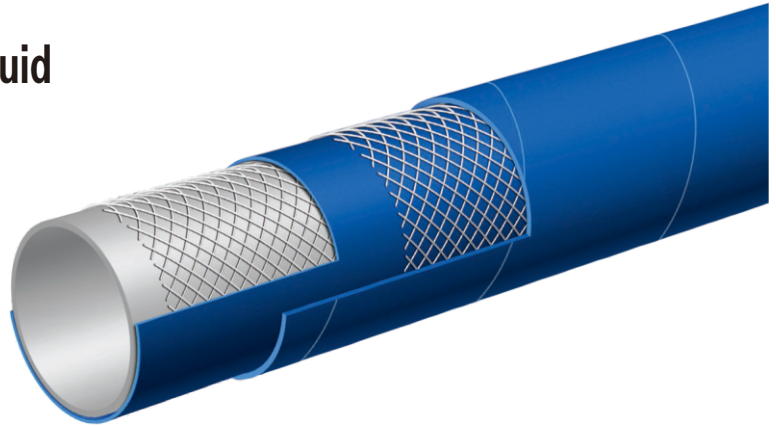
系列 Series	ID 内径 (in.)	ID 内径 (mm)	OD 外径 (in.)	OD 外径 (mm)	Max Rec.WP (PSI) 最大工作压力	Vacuum HG 真空度 (in.)	Min.B.R 最小弯曲半径	Weight 重量 (kg/m)
LT1103-100	1	25	1.46	37	240	30	5	0.89
LT1103-150	1 1/2	38	2.05	52	240	30	7 1/2	1.50
LT1103-200	2	51	2.64	67	240	30	10	2.26
LT1103-300	3	76	3.70	94	240	30	15	3.41

食品管 Food Transfer - FDA Liquid

LT1104

150PSI饮用水输送管

150 PSI Potable Water Hose
Hose is not NSF Approved



应用范围:

饮用水排放。经常用于建设和工业临时用水线路

外层:

蓝色SBR/EPDM混合橡胶，耐磨，耐氧化

加强层:

高张力纺织线绳

内层:

白色NR橡胶，符合FDA和3A要求。

工作压力:

恒定压力

10Bar(150PSI)

温度范围:

-30° C(-22° F)到 +80° C(+176° F)

Applications:

Discharge of water used for drinking. Most often used for temporary water lines in construction and industrial applications.

Cover:

Blue SBR/EPDM blend—abrasion and ozone resistant.

Reinforcement:

High tensile textile cords.

Tube:

White NR. Meets FDA requirements.

Working Pressure:

Constant Pressure—10 Bar (150 PSI)

Temperature Range:

-22° F(-30° C) to 176° F(+80° C)

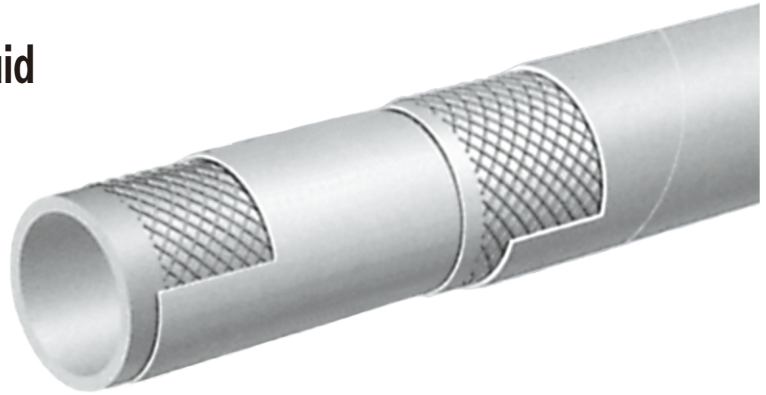
规格 Specifications						
系列 Series	ID 内径 (in.)	ID 内径 (mm)	OD 外径 (in.)	OD 外径 (mm)	Max Rec.WP (PSI) 最大工作压力	Weight 重量 (kg/m)
LT1104-150	1 1/2	38	1.97	50	150	1.09
LT1104-200	2	51	2.56	65	150	1.68
LT1104-300	3	76	3.62	92	150	2.80
LT1104-400	4	102	4.65	118	150	3.73

食品管 Food Transfer - FDA Liquid

LT1105

150PSI食品排放管

150 PSI Food Discharge Hose



应用范围:

液体, 脂肪, 油腻食品和酒精饮料的排放 (最大不超过酒精度75) 软管可以用5%的苏打水消毒。

不推荐用于干磨料。

外层:

白色NBR/PVC混合橡胶, 耐磨, 抗氧化, 耐油

加强层:

高张力纺织线绳

内层:

白色NBR橡胶, 符合FDA要求。

工作压力:

恒定压力

10Bar(150PSI)

温度范围:

-30° C(-22° F)到 +80° C(+176° F)

Applications:

Discharge of liquid, fatty, oily foods and alcoholic beverages (max 75 proof).

★ **Hose may be sterilized with 5% soda solution.**

Not recommended for dry abrasive materials.

Cover:

White NBR/PVC blend—abrasion, ozone and oil resistant.

Reinforcement:

High tensile textile cords.

Tube:

White NBR. Meets FDA and 3A requirements.

Working Pressure:

Constant Pressure—10 Bar (150 PSI)

Temperature Range:

-22° F (-30° C) to 176° F (+80° C)

规格 Specifications

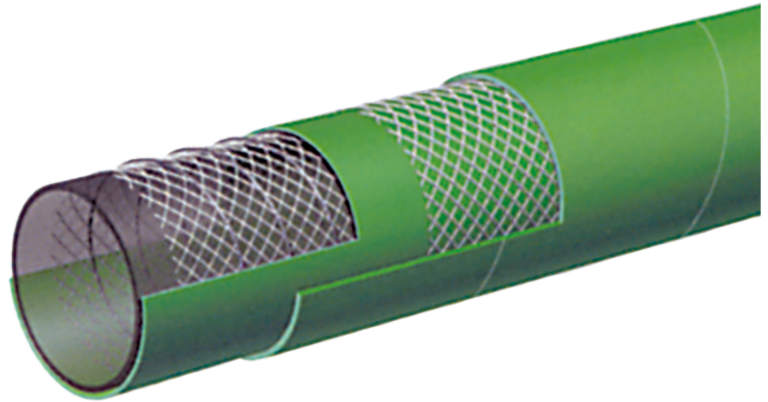
系列 Series	ID 内径 (in.)	ID 内径 (mm)	OD 外径 (in.)	OD 外径 (mm)	Max Rec.WP (PSI) 最大工作压力	Weight 重量 (kg/m)
LT1105-150	1 1/2	38	1.89	48	150	0.89
LT1105-200	2	51	2.48	63	150	1.46
LT1105-300	3	76	3.46	88	150	2.05

化学管 Chemical

LT1201

240PSI化学品输送管-XLPE

Acid - Chemical S & D 240 PSI - XLPE



应用范围:

各种化学药品和溶剂的抽吸和转移。可以处理现有90%的化学药品。

外层:

绿色EMDM橡胶, 耐磨, 耐氧化

加强层:

高张力纺织线绳和4高灵活度螺旋钢线

内层:

透明的XLPE (交联聚乙烯)

工作压力:

恒定压力

16Bar(240PSI)

温度范围:

通常推荐操作温度为:

-20° C(-4° F)到 +65° C(+150° F)

Applications:

Suction and transfer service for a variety of chemicals and solvents. Will handle 90% of existing chemicals. See Chemical Resistance Chart on pages 66-75.

Cover:

Green EPDM—abrasion and ozone resistant.

Reinforcement:

High tensile textile cords and 4 highly flexible steel helix wires.

Tube:

Transparent XLPE (cross-linked polyethylene).

Working Pressure:

Constant Pressure—16 Bar (240 PSI)

Temperature Range:

Normal recommended operating temperature is -4° F (-20° C) to 150° F (+65° C)

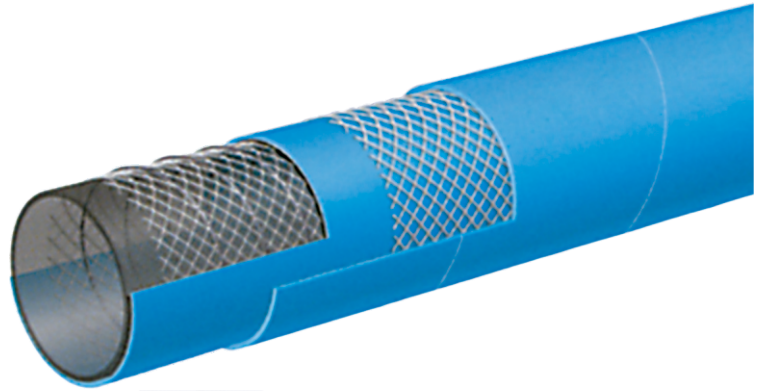
规格 Specifications								
系列 Series	ID 内径 (in.)	ID 内径 (mm)	OD 外径 (in.)	OD 外径 (mm)	Max Rec.WP (PSI) 最大工作压力	Vacuum HG 真空度 (in.)	Min.B.R 最小弯曲半径	Weight 重量 (kg/m)
LT1201-075	3/4	19	1.22	31	240	27	7 1/2	0.68
LT1201-100	1	25	1.46	37	240	27	9	0.83
LT1201-150	1 1/2	38	1.97	50	240	27	13 1/4	1.13
LT1201-200	2	51	2.48	63	240	27	16 1/4	1.49
LT1201-300	3	76	3.62	92	240	24	20 3/4	2.72
LT1201-400	4	102	4.65	118	240	24	26 1/2	3.72

化学管 Chemical

LT1202

240PSI化学品输送管

Acid - Chemical S & D 240 PSI -UHMWPE Meets
FDA Requirements Suitable for use with DEF



应用范围:

各种化学药品和酸的抽吸和转移。可以处理现有98%的化学药品。

外层:

蓝色EMDM橡胶, 耐磨, 耐氧化

加强层:

高张力合成线绳和4高灵活度螺旋钢线

内层:

透明的UHMWPE (超高分子量聚乙烯)

工作压力:

恒定压力

16Bar(240PSI)

温度范围:

通常推荐操作温度为:

-20° C(-4° F)到 +65° C(+150° F)

Applications:

Suction and transfer service for a variety of chemicals and acids. Will handle 98% of EXISTING CHEMICALS. See Chemical Resistance Chart on pages 66-75.

Cover:

Blue EPDM-abrasion and ozone resistant.

Reinforcement:

Synthetic textile cords with 4 highly flexible steel helix wires.

Tube:

Transparent UHMWPE (Ultra High Molecular Weight Polyethylene).

Working Pressure:

Constant Pressure-16 Bar (240 PSI)

Temperature Range:

Normal recommended operating temperature is-4° F (-20° C) to 150° F (+65° C)

规格 Specifications

系列 Series	ID 内径 (in.)	ID 内径 (mm)	OD 外径 (in.)	OD 外径 (mm)	Max Rec.WP (PSI) 最大工作压力	Vacuum HG 真空度 (in.)	Min.B.R 最小弯曲半径	Weight 重量 (kg/m)
LT1202-075	3/4	19	1.22	31	240	27	71/2	0.61
LT1202-100	1	25	1.46	37	240	27	9	0.74
LT1202-125	1 1/4	32	1.73	44	240	27	10 1/4	0.89
LT1202-150	1 1/2	38	1.97	50	240	27	13 1/4	1.01
LT1202-200	2	51	2.48	63	240	27	16 1/4	1.35
LT1202-250	2 1/2	63	3.03	77	240	27	17 1/2	2.08
LT1202-300	3	76	3.62	92	240	24	20 3/4	2.84
LT1202-400	4	102	4.65	118	240	24	26 1/2	3.88

石油管 Petroleum

LT1203

240PSI船舶排气管 -USCG/SAE J1527 B2

Hard Wall Marine Exhaust
Hose USCG/SAE J1527 B2



应用范围:

燃料, 油, 液压流体的吸入和排出。适用于从水冷固定物和船用柴油机中排气, 提供最大的灵活性。

外层:

黑色NBR/PVC混合橡胶, 耐磨, 耐腐蚀, 耐火和碳氢化合物

加强层:

高张力纺织线绳和4高灵活度螺旋钢线

内层:

黑色NBR橡胶, 排气, 耐火, 耐油

工作压力:

恒定压力
5Bar(75PSI)

温度范围:

燃料, 油, 液压流体的吸入和排出

通常推荐操作温度为:

-20°C(-4°F)到 +100°C(+212°F)

Applications:

Fuel, oil and hydraulic fluids suction and discharge. Suitable for exhaust gas from water cooled stationary or marine diesel engines. Offers maximum flexibility.

Cover:

Black NBR/PVC blend—abrasion, ozone, hydrocarbon and fire resistant.

Reinforcement:

High tensile textile cords and 4 highly flexible steel helix wires.

Tube:

Black NBR—exhaust gas, fuel and fire resistant.

Working Pressure:

Constant Pressure—5 Bar (75 PSI)

Temperature Range:

-4° F(-20° C) to 212° F(+100° C)

规格 Specifications								
系列 Series	ID 内径 (in.)	ID 内径 (mm)	OD 外径 (in.)	OD 外径 (mm)	Max Rec.WP (PSI) 最大工作压力	Vacuum HG 真空度 (in.)	Min.B.R 最小弯曲半径	Weight 重量 (kg/m)
LT1203-062	5/8	16	1.02	26	75	30	2	0.54
LT1203-075	3/4	19	1.18	30	75	30	2 1/4	0.65
LT1203-087	7/8	22	1.26	32	75	30	2 3/4	0.74
LT1203-100	1	25	1.38	35	75	30	3	0.83
LT1203-112	1 1/8	28	1.50	38	75	30	3 1/4	0.89
LT1203-125	1 1/4	32	1.65	42	75	30	3 3/4	0.97
LT1203-137	1 3/8	35	1.77	45	75	30	4 1/4	1.04
LT1203-150	1 1/2	38	1.89	48	75	30	4 1/2	1.13
LT1203-162	1 5/8	42	2.17	52	75	30	5	1.21
LT1203-175	1 3/4	45	2.16	55	75	30	5 1/4	1.29
LT1203-189	1 7/8	48	2.28	58	75	30	5 3/4	1.35
LT1203-200	2	51	2.40	61	75	30	6	1.47
LT1203-225	2 1/4	57	2.64	67	75	30	6 3/4	1.62
LT1203-238	2 3/8	60	2.76	70	75	27	7	1.86
LT1203-250	2 1/2	63	2.87	73	75	27	7 1/2	1.95

石油管 Petroleum

LT1203

240PSI船舶排气管 -USCG/SAE J1527 B2

Hard Wall Marine Exhaust
Hose USCG/SAE J1527 B2



规格 Specifications

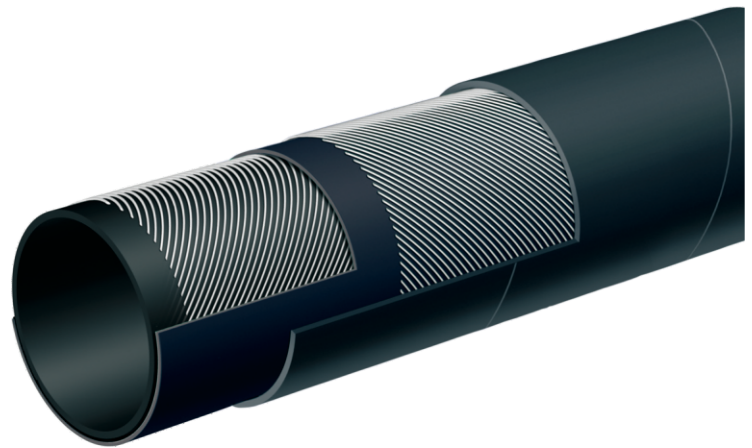
系列 Series	ID 内径 (in.)	ID 内径 (mm)	OD 外径 (in.)	OD 外径 (mm)	Max Rec.WP (PSI) 最大工作压力	Vacuum HG 真空度 (in.)	Min.B.R 最小弯曲半径	Weight 重量 (kg/m)
LT1203-275	23/4	70	3.11	80	75	27	81/4	2.10
LT1203-300	3	76	3.39	86	75	27	9	2.28
LT1203-350	31/2	90	3.94	100	75	27	101/2	2.84
LT1203-400	4	102	4.41	112	75	27	12	3.15
LT1203-450	41/2	115	5.00	127	75	27	131/2	4.05
LT1203-500	5	127	5.55	141	75	24	15	4.52

石油管 Petroleum

LT1204

船舶排气管SAE J2006 R1

Soft Wall Marine Exhaust Hose - SAE J2006 R1



应用范围:

船用湿排气和舱底泵连接

外层:

黑色NBR/PVC混合橡胶, 耐磨, 抗氧化, 耐碳氢化合物

加强层:

高张力纺织线绳

内层:

黑色NBR橡胶

工作压力:

恒定压力

5Bar(75PSI)

温度范围:

燃料, 油, 液压流体的吸入和排出

通常推荐操作温度为:

-30° C(-22° F)到 +100° C(+176° F)

Applications:

Marine wet exhaust and bilge pump connections.

Cover:

Black NBR/PVC blend—abrasion, ozone and hydrocarbon resistant.

Reinforcement:

High tensile textile cords.

Tube:

Black NBR.

Working Pressure:

Constant Pressure—5 Bar (75 PSI)

Temperature Range:

-22° F (-30° C) to 176° F (+100° C)

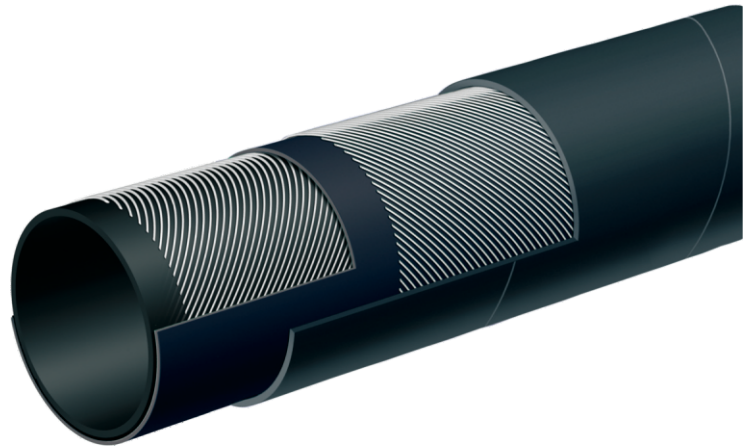
规格 Specifications						
系列 Series	ID 内径 (in.)	ID 内径 (mm)	OD 外径 (in.)	OD 外径 (mm)	Max Rec.WP (PSI) 最大工作压力	Weight 重量 (kg/m)
LT1204-100	1	25	1.38	35	75	0.64
LT1204-112	1 1/8	28	1.50	38	75	0.70
LT1204-125	1 1/4	32	1.65	42	75	0.77
LT1204-137	1 3/8	35	1.77	45	75	0.83
LT1204-150	1 1/2	38	1.89	48	75	0.91
LT1204-162	1 5/8	42	2.05	52	75	0.98
LT1204-175	1 3/4	45	2.17	55	75	1.04
LT1204-189	1 7/8	48	2.28	58	75	1.12
LT1204-200	2	51	2.48	63	75	1.44
LT1204-225	2 1/4	57	2.72	69	75	1.59
LT1204-238	2 3/8	60	2.91	74	75	1.95
LT1204-250	2 1/2	63	3.03	77	75	2.04
LT1204-300	3	76	3.54	90	75	2.44
LT1204-350	3 1/2	90	4.09	104	75	2.90
LT1204-400	4	102	4.57	116	75	3.24

石油管 Petroleum

LT1204

船舶排气管SAE J2006 R1

Soft Wall Marine Exhaust Hose - SAE J2006 R1



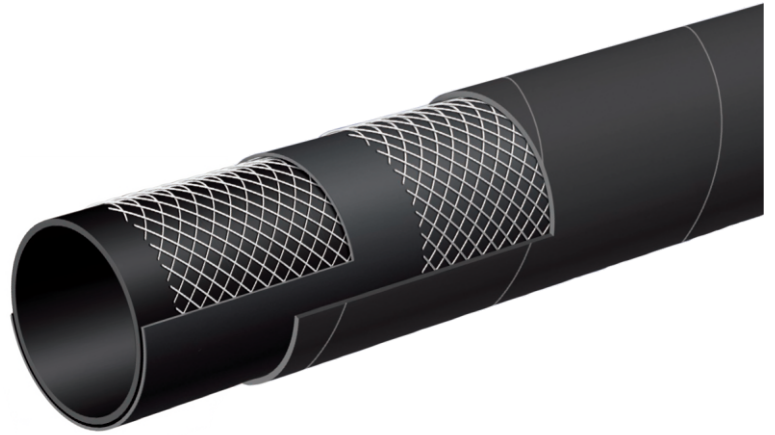
规格 Specifications						
系列 Series	ID 内径 (in.)	ID 内径 (mm)	OD 外径 (in.)	OD 外径 (mm)	Max Rec.WP (PSI) 最大工作压力	Weight 重量 (kg/m)
LT1204-450	4 1/2	115	5.08	129	75	3.62
LT1204-500	5	127	5.55	141	75	3.99
LT1204-600	6	152	6.61	168	75	4.85
LT1204-662	6 5/8	168	7.24	184	75	5.31
LT1204-800	8	203	8.70	221	75	7.38

石油管 Petroleum

LT1205

400PSI输送管

400 PSI Oil Rigger / Frack Discharge Hose



应用范围:

在油田和天然气勘探领域中，压裂液，液体泥浆和原油输送

外层:

黑色合成橡胶，耐磨，抗氧化，耐油

加强层:

高张力纺织线绳

内层:

黑色合成橡胶

工作压力:

恒定压力

27Bar(400PSI)

适用温度范围:

-30° C(-22° F)到 +80° C(+176° F)

Applications:

Fracking fluids, liquid mud and crude oil delivery in oil field and gas exploration.

Cover:

Black synthetic elastomer—abrasion, oil and ozone resistant.

Reinforcement:

High tensile textile cords.

Tube:

Black synthetic elastomer.

Working Pressure:

Constant Pressure—27 Bar (400 PSI)

Temperature Range:

-22° F (-30° C) to 176° F (+80° C)

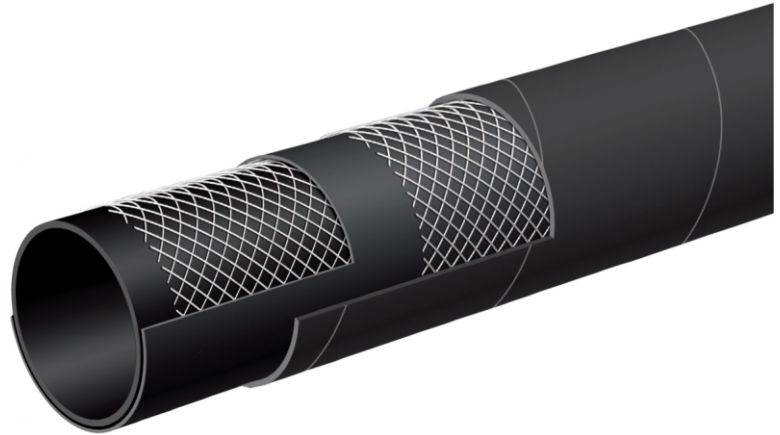
规格 Specifications						
系列 Series	ID 内径 (in.)	ID 内径 (mm)	OD 外径 (in.)	OD 外径 (mm)	Max Rec.WP (PSI) 最大工作压力	Weight 重量 (kg/m)
Lt1205	4	102	4.72	120	400	4.30

石油管 Petroleum

LT1206

400PSI输送管带SUPERTUFF外层

400 PSI Oil Rigger/Fracc Discharge Hose with SUPERTUFF Cover



应用范围:

在油田和天然气勘探领域中，高强度压裂液，液体泥浆，和原油输送

外层:

黑色SUPERTUFF外层，耐磨，抗氧化，耐油

加强层:

高张力纺织线绳

内层:

黑色合成橡胶

工作压力:

恒定压力

27Bar(400PSI)

适用温度范围

-30° C(-22° F)到 +80° C(+176° F)

Applications:

Fracking fluids, liquid mud and crude oil delivery in heavy duty oil field and gas exploration.

Cover:

Black SUPERTUFF cover—abrasion, oil and ozone resistant.

Reinforcement:

High tensile textile cords.

Tube:

Black synthetic elastomer.

Working Pressure:

Constant Pressure—27 Bar (400 PSI)

Temperature Range:

-22° F(-30° C) to 176° F(+80° C)

规格 Specifications

系列 Series	ID 内径 (in.)	ID 内径 (mm)	OD 外径 (in.)	OD 外径 (mm)	Max Rec.WP (PSI) 最大工作压力	Weight 重量 (kg/m)
Lt1206	4	102	4.72	120	400	4.36

石油管 Petroleum

LT1207

150PSI波纹状油箱管

150 PSI Corrugated Oil Rigger/
Oil Field-Fracc Tank Hose



应用范围:

适用于油田真空罐，处理原油，泥浆

注：用于低于35%芳烃的应用。不用于精制石油产品

外层:

黑色波纹SBR橡胶，耐磨，抗氧化，有限的耐油性。

加强层:

高张力纺织线绳和高灵活度螺旋钢线

内层:

黑色腈-PVC混合橡胶，有限的耐油性，适于在油田使用。

工作压力:

恒定压力

10Bar(150PSI)

适用温度范围:

-30° C(-22° F)到 +80° C(+176° F)

Applications:

Oil field vacuum tank service, for handling crude oil, fracc solutions and slurries.

Note: For applications up to 35% aromatics. Not for use with refined petroleum products.

Cover:

Black corrugated SBR-abrasion, ozone, limited oil resistance.

Reinforcement:

High tensile textile cords; highly flexible steel helix wire.

Tube:

Black Nitrile-PVC blend, limited oil resistance, for oil field use.

Working Pressure:

Constant Pressure-10 Bar (150 PSI)

Temperature Range:

-22° F(-30° C) to 176° F(+80° C)

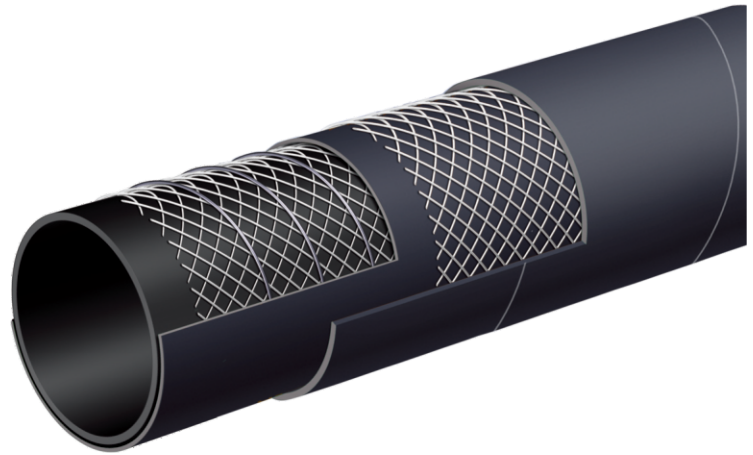
规格 Specifications						
系列 Series	ID 内径 (in.)	ID 内径 (mm)	Max Rec.WP (PSI) 最大工作压力	Vacuum HG 真空度 (in.)	Min.B.R 最小弯曲半径	Weight 重量 (kg/m)
LT1207-200	2	51	150	30	6	1.28
LT1207-300	3	76	150	27	9	2.40
LT1207-400	4	102	150	27	12	3.56

石油管 Petroleum

LT1208

150PSI油箱管

150 PSI Oil Rigger/Oil Field-Fracc Tank Hose



应用范围:

适用于油田真空罐，处理原油，泥浆

注：用于低于35%芳烃的应用。不用于精制石油产品

外层:

黑色SBR橡胶，耐磨，耐氧化，有限的耐油性。

加强层:

高张力纺织线绳和高灵活度螺旋钢线

内层:

黑色腈-PVC混合橡胶，有限的耐油性，适于在油田使用。

工作压力:

恒定压力

10Bar(150PSI)

适用温度范围:

-30° C(-22° F)到 +80° C(+176° F)

Applications:

Oil field vacuum tank service, for handling crude oil, frack solutions and slurries.

Note: For applications up to 35% aromatics. Not for use with refined petroleum products.

Cover:

Black SBR—abrasion, ozone, limited oil resistance.

Reinforcement:

High tensile textile cords; highly flexible steel helix wire.

Tube:

Black Nitrile—PVC blend, limited oil resistance, for oil field use.

Working Pressure:

Constant Pressure—10 Bar (150 PSI)

Temperature Range:

-22° F(-30° C) to 176° F(+80° C)

规格 Specifications

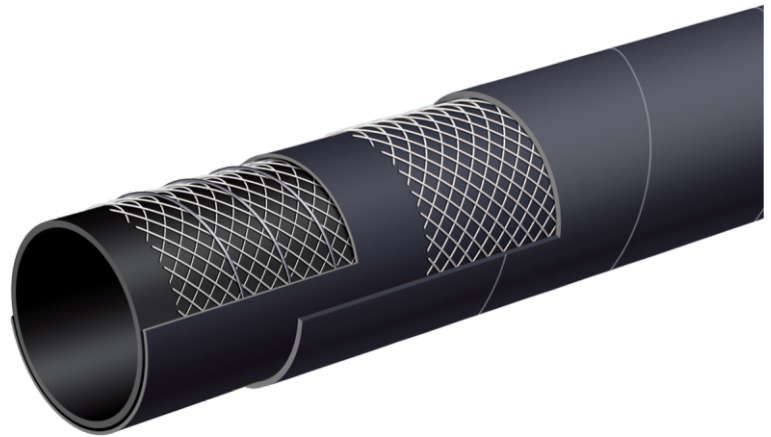
系列 Series	ID 内径 (in.)	ID 内径 (mm)	OD 外径 (in.)	OD 外径 (mm)	Max Rec.WP (PSI) 最大工作压力	Vacuum HG 真空度 (in.)	Min.B.R 最小弯曲半径	Weight 重量 (kg/m)
LT1208-200	2	51	2.40	61	150	30	10	1.38
LT1208-300	3	76	3.46	88	150	27	15	2.57
LT1208-400	4	102	4.57	116	150	27	20	3.57
LT1208-600	6	152	6.61	168	150	24	30	6.83
LT1208-800	8	203	8.86	225	150	21	40	9.82

石油管 Petroleum

LT1209

SAE 100 R4回油管

Flexor - SAE 100 R4 Oil Return Hose



应用范围:

低压返回线或吸入线为SAE J517 100 R4 弯曲半径要求的一半, 适用于石油基液压油, 水和乙二醇, 阻燃水性液压油, 润滑油, 原油, 燃料油和水。

外层:

黑色CR传导橡胶, 耐磨, 抗氧化, 耐油, 抗风化。

加强层:

高张力纺织线绳和高灵活度螺旋钢线

内层:

黑色NBR传导橡胶

工作压力:

恒定压力

20 Bar (300 PSI) 3/4"

17 Bar (250 PSI) 1" 14 Bar (200 PSI) 1 1/4"

10 Bar (150 PSI) 1 1/2" 7 Bar (100 PSI) 2"

适用温度范围:

-40° F (-40° C) to 212° F (+100° C)

持续操作

最大操作温度: 257° F (+125° C).

空气最高温度: 175° F (80° C).

注意: 操作温度超过212° F (+100° C) 将有可能对产品造成损伤。

Applications:

Low pressure return lines or suction lines with half the bend radius requirements of SAE J517 100 R4, service with petroleum based hydraulic fluids, water-glycol and water-fire resistant hydraulic fluids, oil, lubricants, crude oil, fuel oils and water.

Cover:

Black CR-oil, fuel, weather, ozone and abrasionresistant.

Reinforcement:

Textile reinforced with four spiral wire helix to prevent collapsing.

Tube:

Black conductive NBR.

Working Pressure:

Constant Pressure-20 Bar (300 PSI) 3/4"

17 Bar (250 PSI) 1" 14 Bar (200 PSI) 1 1/4"

10 Bar (150 PSI) 1 1/2" 7 Bar (100 PSI) 2"

Temperature Range:

-40° F (-40° C) to 212° F (+100° C) constant operation

Maximum operating temperature: 257° F (+125° C).

Air maximum temperature: 175° F (80° C).

Note: Operating temperatures in excess of 212° F (+100° C) may materially reduce the life of the hose.

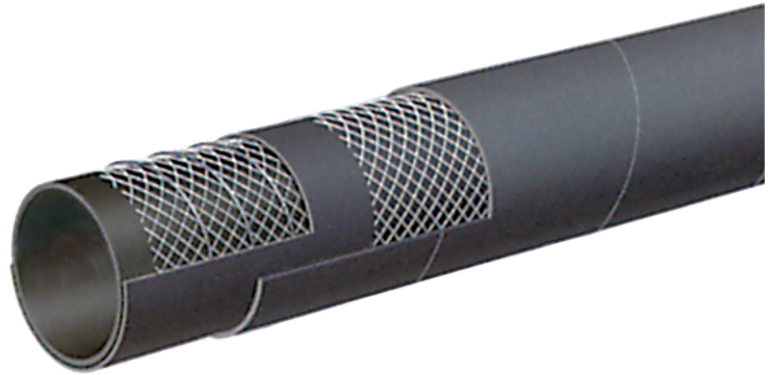
规格 Specifications								
系列 Series	ID 内径 (in.)	ID 内径 (mm)	OD 外径 (in.)	OD 外径 (mm)	Max Rec.WP (PSI) 最大工作压力	Vacuum HG 真空度 (in.)	Min.B.R 最小弯曲半径	Weight 重量 (kg/m)
LT1209-075	3/4	19	1.14	29	300	30	21/4	0.61
LT1209-100	1	25	1.38	35	250	30	3	0.77
LT1209-125	1 1/4	32	1.65	42	200	30	3 3/4	0.91
LT1209-150	1 1/2	38	1.89	48	150	30	4 1/2	1.04
LT1209-200	2	51	2.40	61	100	30	6	1.34

石油管 Petroleum

LT1210

150PSI黑色石油吸排管

150 PSI Black Petroleum S & D Hose



应用范围:

用于卡车和油罐车间汽油，石油和其他芳香烃含量低于50%石油基产品的吸排。

外层:

黑色CR橡胶，耐磨，抗氧化，耐碳氢化合物。

加强层:

高张力纺织线绳和高灵活度螺旋钢丝

内层:

黑色NBR传导橡胶

工作压力:

恒定压力

10Bar(150PSI)

适用温度范围:

-30° C(-22° F)到+80° C(+176° F)

该产品不推荐在轮轴上使用

Applications:

For suction and discharge applications in truck and tank car transfer of gasoline, oil and other petroleum-based products with up to 50% aromatic content.

Cover:

Black CR-abrasion, ozone and hydrocarbon resistant.

Reinforcement:

High tensile textile cords and highly flexible steel helix wires.

Tube:

Black conductive NBR.

Working Pressure:

Constant Pressure-10 Bar (150 PSI)

Temperature Range:

-22° F(-30° C) to 176° F(+80° C)

T1210 IS NOT RECOMMENDED FOR USE ON A REEL .

规格 Specifications

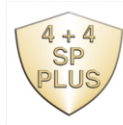
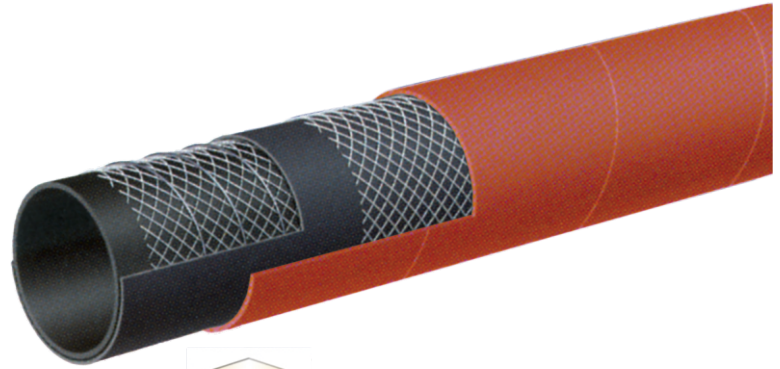
系列 Series	ID 内径 (in.)	ID 内径 (mm)	OD 外径 (in.)	OD 外径 (mm)	Max Rec.WP (PSI) 最大工作压力	Vacuum HG 真空度 (in.)	Min.B.R 最小弯曲半径	Weight 重量 (kg/m)
LT1210-075	3/4	19	1.14	29	150	30	3	0.61
LT1210-100	1	25	1.38	35	150	30	4	0.77
LT1210-125	1 1/4	32	1.65	42	150	30	5	0.91
LT1210-150	1 1/2	38	1.89	48	150	30	6	1.06
LT1210-200	2	51	2.40	61	150	30	8	1.35
LT1210-250	2 1/2	63	2.95	75	150	27	10	2.11
LT1210-300	3	76	3.46	88	150	27	12	2.53
LT1210-400	4	102	4.57	116	150	27	16	3.51
LT1210-600	6	152	6.61	168	150	24	24	7.37
LT1210-800	8	203	8.70	221	150	21	32	11.71

石油管 Petroleum

LT1211

150PSI红色石油吸排管

150 PSI Red Petroleum S & D Hose



应用范围:

用于卡车和油罐车间汽油, 石油和其他芳香烃含量低于50%石油基产品的吸排。

外层:

红色CR橡胶, 耐磨, 抗氧化, 耐碳氢化合物。

加强层:

高张力纺织线绳和高灵活度螺旋钢线

内层:

黑色NBR传导橡胶

工作压力:

恒定压力

10Bar(150PSI)

适用温度范围:

-30° C(-22° F)到 +80° C(+176° F)

该产品不推荐在轮轴上使用

Applications:

For suction and discharge applications in truck and tank car transfer of gasoline, oil and other petroleum-based products with up to 50% aromatic content.

Cover:

Red CR—abrasion, ozone and hydrocarbon resistant.

Reinforcement:

High tensile textile cords and highly flexible steel helix wires.

Tube:

Black conductive NBR.

Working Pressure:

Constant Pressure—10 Bar (150 PSI)

Temperature Range:

-22° F (-30° C) to 176° F (+80° C)

T1211 IS NOT RECOMMENDED FOR USE ON A REEL .

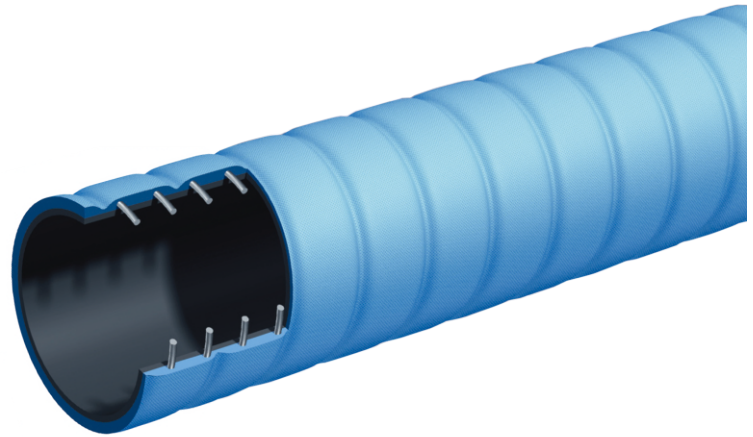
规格 Specifications								
系列 Series	ID 内径 (in.)	ID 内径 (mm)	OD 外径 (in.)	OD 外径 (mm)	Max Rec.WP (PSI) 最大工作压力	Vacuum HG 真空度 (in.)	Min.B.R 最小弯曲半径	Weight 重量 (kg/m)
LT1211-150	1 1/2	38	1.89	48	150	30	6	1.09
LT1211-200	2	51	2.40	61	150	30	8	1.40
LT1211-300	3	76	3.46	88	150	27	12	2.59
LT1211-400	4	102	4.57	116	150	27	16	3.59

石油管 Petroleum

LT1212

150PSI波纹抗寒石油吸排管

150 PSI Corrugated Petroleum S & D -Arctic Hose



应用范围:

用于卡车和油罐车间汽油，石油和其他芳香烃含量低于50%石油基产品的吸排。该产品在低温条件下，有极高的灵活性。

外层:

蓝色波纹橡胶，耐磨，抗氧化，耐碳氢化合物。

加强层:

高张力纺织线绳和高灵活度螺旋钢线

内层:

黑色NBR传导橡胶

工作压力:

恒定压力

10Bar(150PSI)

适用温度范围:

-54° C(-65° F)到 +82° C(+180° F)

Applications:

For suction and discharge applications in truck and tank car transfer of gasoline, oil and other petroleum-based products with up to 50% aromatic content. Where extreme flexibility is needed in low temperature.

Cover:

Blue corrugated-abrasion, ozone and hydrocarbon resistant.

Reinforcement:

High tensile textile cords and highly flexible steel helix wires.

Tube:

Black conductive NBR.

Working Pressure:

Constant Pressure-150 PSI

Temperature Range:

-65° F (-54° C) to 180° F (+82° C)

规格 Specifications

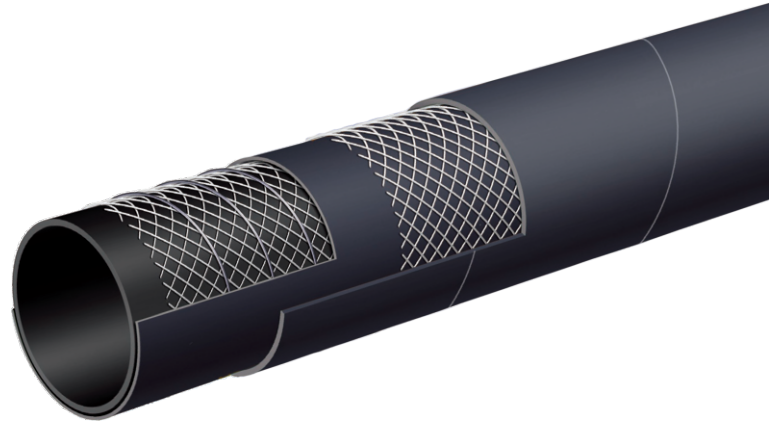
系列 Series	ID 内径 (in.)	ID 内径 (mm)	Max Rec.WP (PSI) 最大工作压力	Vacuum HG 真空度 (in.)	Min.B.R 最小弯曲半径	Weight 重量 (kg/m)
LT1212-200	2	51	150	30	3	1.58
LT1212-300	3	76	150	30	4 1/2	4.23
LT1212-400	4	102	150	30	6	3.97

石油管 Petroleum

LT1213

300PSI黑色石油燃料吸排管

300 PSI Black Fuel & Oil S & D Hose



应用范围:

芳香烃含量低于50%燃料和石油的吸排。
该产品为高强度应用设计。

外层:

黑色CR传导橡胶，耐磨，抗氧化，耐碳氢化合物。

加强层:

高张力纺织线绳和高灵活度螺旋钢线

内层:

黑色NBR传导橡胶

工作压力:

恒定压力

20Bar(300PSI)

适用温度范围:

-30° C(-22° F)到 +80° C(+176° F)

Applications:

Fuel and oil suction and discharge for up to 50% aromatic content. Designed for heavy duty applications.

Cover:

Black conductive CR—abrasion, ozone and hydrocarbon resistant.

Reinforcement:

High tensile textile cords, steel helix wires and static wire.

Tube:

Black conductive NBR.

Working Pressure:

Constant Pressure—20 Bar (300 PSI)

Temperature Range:

-22° F (-30° C) to 176° F (+80° C)

规格 Specifications

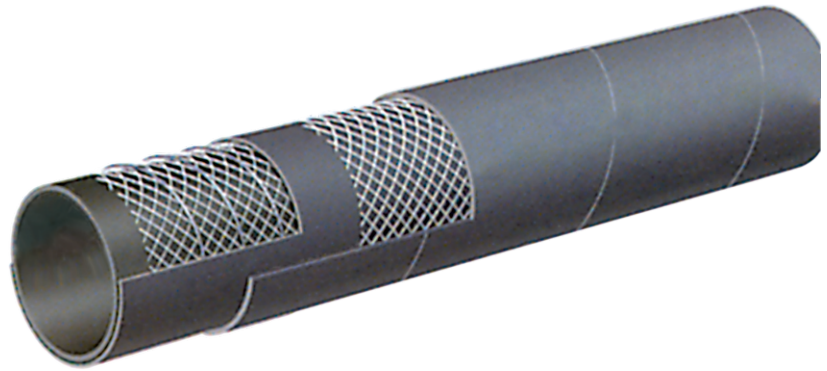
系列 Series	ID 内径 (in.)	ID 内径 (mm)	OD 外径 (in.)	OD 外径 (mm)	Max Rec.WP (PSI) 最大工作压力	Vacuum HG 真空度 (in.)	Min.B.R 最小弯曲半径	Weight 重量 (kg/m)
LT1213-200	2	51	2.48	63	300	30	8	1.64
LT1213-300	3	76	3.54	90	300	27	12	2.63
LT1213-400	4	102	4.57	116	300	27	16	3.62
LT1213-600	6	152	6.69	170	300	24	24	8.33

石油管 Petroleum

LT1214

150PSI黑色生物燃油吸排管

150 PSI Black Biofuel Petroleum
S & D Hose



应用范围:

用于卡车和油罐车间汽油, 石油, 生物燃油, 最高E98,B100, 环境温度下芳香烃含量低于65%产品的吸排。

外层:

黑色特殊混合氯丁橡胶, 添加耐磨, 抗氧化, 耐碳氢化合物特性。

加强层:

高张力纺织线绳和高灵活度螺旋钢线

内层:

黑色传导合成橡胶

工作压力:

恒定压力

10Bar(150PSI)

适用温度范围:

-30° C(-22° F)到 +80° C(+176° F)

该产品不推荐在轮轴上使用

Applications:

For suction and discharge applications in truck and tank car transfer of gasoline, oil and Biofuels—up to E98 and B100* with up to 60% aromatic content at ambient temperature.

Cover:

Black specially-blended neoprene—added resistance against abrasion, ozone and hydrocarbons.

Reinforcement:

High tensile textile cords and steel helix wires.

Tube:

Black conductive synthetic rubber.

Working Pressure:

Constant Pressure—10 Bar (150 PSI)

Temperature Range:

-22° F(-30° C) to 176° F(+80° C)

规格 Specifications

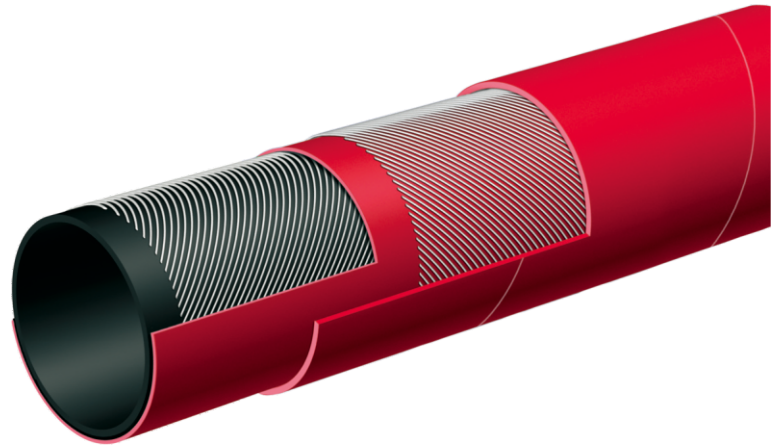
系列 Series	ID 内径 (in.)	ID 内径 (mm)	OD 外径 (in.)	OD 外径 (mm)	Max Rec.WP (PSI) 最大工作压力	Vacuum HG 真空度 (in.)	Min.B.R 最小弯曲半径	Weight 重量 (kg/m)
LT1214-075	3/4	19	1.14	29	150	30	3	0.61
LT1214-100	1	25	1.38	35	150	30	4	0.76
LT1214-125	1 1/4	32	1.65	42	150	30	5	0.89
LT1214-150	1 1/2	38	1.89	48	150	30	6	1.06
LT1214-200	2	51	2.40	61	150	30	8	1.35
LT1214-250	2 1/2	63	2.95	75	150	27	10	2.11
LT1214-300	3	76	3.46	88	150	27	12	2.54
LT1214-400	4	102	4.57	116	150	27	16	3.54

石油管 Petroleum

LT1215

150PSI排油管

150 PSI Oil Discharge Hose



应用范围:

排油软管适用于卡车、码头或驳船。以及适用于软壁软管的应用。

外层:

红色CR橡胶，耐磨，耐氧化，耐碳氢化合物。

加强层:

高张力缠绕线绳带嵌入式静电线

内层:

黑色传导NBR橡胶

工作压力:

恒定压力

10Bar(150PSI)

适用温度范围:

-30° C(-22° F)到 +80° C(+176° F)

Applications:

Oil discharge hose designed for use on trucks, docks or barges where a soft wall hose is required.

Cover:

Red CR-abrasion, ozone and hydrocarbon resistant.

Reinforcement:

Spiralled high tensile textile cords with embedded static wire.

Tube:

Black conductive NBR.

Working Pressure:

Constant Pressure-10 Bar (150 PSI)

Temperature Range:

-22° F(-30° C) to 176° F(+80° C)

规格 Specifications						
系列 Series	ID 内径 (in.)	ID 内径 (mm)	OD 外径 (in.)	OD 外径 (mm)	Max Rec.WP (PSI) 最大工作压力	Weight 重量 (kg/m)
LT1215-150	1 1/2	38	1.89	48	150	0.92
LT1215-200	2	51	2.40	61	150	1.22
LT1215-300	3	76	3.46	88	150	2.11
LT1215-400	4	102	4.49	114	150	2.86

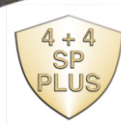
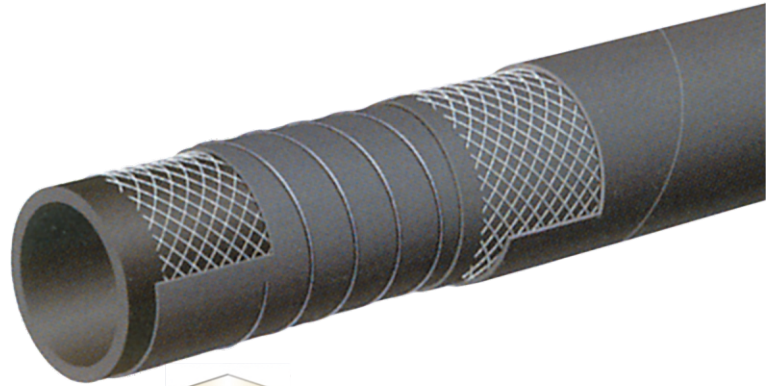


石油管 Petroleum

LT1216

150PSI热焦油沥青吸排管

150 PSI Hot Tar & Asphalt S & D Hose

**应用范围:**

热焦油和沥青的吸排。

外层:

黑色CSM橡胶，耐磨，抗氧化，耐热焦油。

加强层:

高张力纺织线绳高灵活度螺旋钢线

内层:

黑色NBR橡胶，耐热焦油，热沥青

工作压力:

恒定压力

10Bar(150PSI)

适用温度范围:

-20° C(-4° F)到 +180° C(+356° F)

Applications:

Hot tar and asphalt suction and discharge service.

Cover:

Black CSM—abrasion, ozone and hot tar resistant.

Reinforcement:

High tensile textile cords with steel helix wires.

Tube:

Black NBR—hot tar and asphalt resistant.

Working Pressure:

10 Bar (150 PSI)

Temperature Range:

-4° F (-20° C) to 356° F (+180° C)

规格 Specifications

系列 Series	ID 内径 (in.)	ID 内径 (mm)	OD 外径 (in.)	OD 外径 (mm)	Wall Thickness 壁厚 (mm)	Max Rec.WP (PSI) 最大工作压力	Vacuum HG 真空度 (in.)	Min.B.R 最小弯曲半径	Weight 重量 (kg/m)
LT1216-200	2	51	2.72	69	9	150	30	10	2.44
LT1216-300	3	76	3.78	96	10	150	27	15	4.00
LT1216-400	4	102	4.80	122	10	150	27	20	5.31

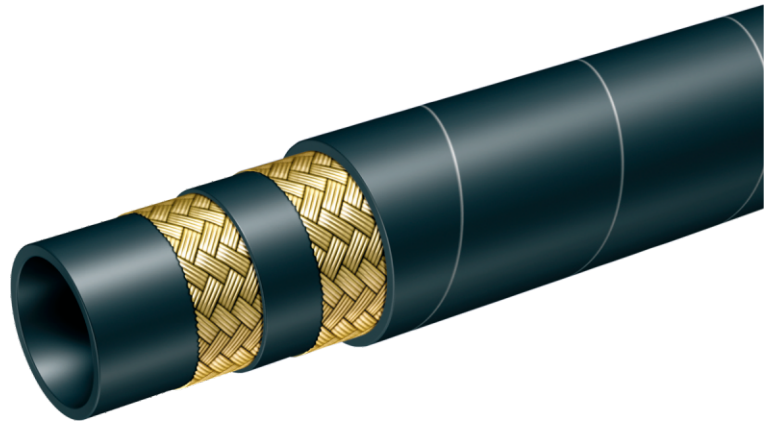


石油管 Petroleum

LT1217

300PSI热焦油沥青敷料输送管

300 PSI Hot Tar & Asphalt Applicator Delivery Hose



应用范围:

热焦油和沥青的输送。

外层:

黑色CR橡胶, 耐磨, 耐氧化, 耐碳氢化合物, 耐火

加强层:

高张力编织钢线

内层:

黑色NBR橡胶, 耐热焦油, 热沥青

安全系数:

10: 1

工作压力:

恒定压力

20Bar(300PSI)

适用温度范围:

-30° C(-22° F)到 +180° C(+356° F)

Applications:

Hot tar and asphalt delivery service.

Cover:

Black CR—abrasion, ozone, hydrocarbon and fire resistant.

Reinforcement:

High tensile steel wire braids.

Tube:

Black NBR—hot tar and asphalt resistant.

Safety Factor:

10:1

Working Pressure:

20 Bar (300 PSI)

Temperature Range:

-22° F (-30° C) to 356° F (+180° C)

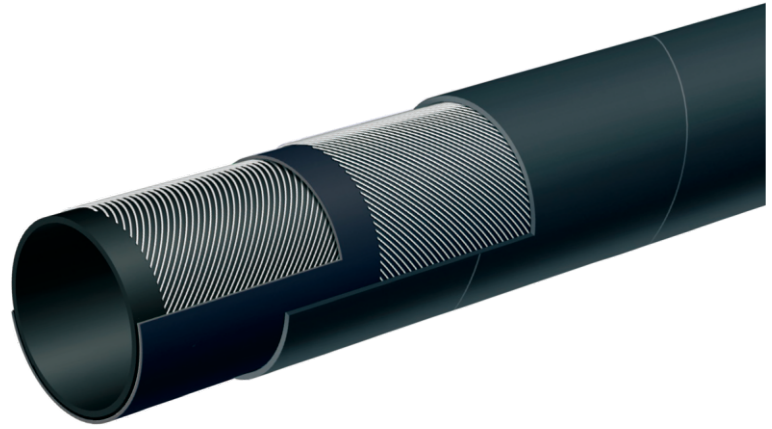
规格 Specifications								
系列 Series	ID 内径 (in.)	ID 内径 (mm)	OD 外径 (in.)	OD 外径 (mm)	Wall Thickness 壁厚 (mm)	Max Rec.WP (PSI) 最大工作压力	Min.B.R 最小弯曲半径	Weight 重量 (kg/m)
LT1217-075	3/4	19	1.26	32	6	300	3	0.74
LT1217-100	1	25	1.50	38	6	300	3	1.15

物料管 Material Handling

LT1301

150PSI双层磨砂材料喷射管

150 PSI 2-Ply Abrasive Material Blast Hose



应用范围:

设计用来输送磨料、喷砂和喷丸材料。

外层:

黑色SBR/NR混合传导橡胶, 耐磨, 耐氧化, 针孔设计。

加强层:

高张力纺织线绳--双层结构

内层:

黑色NR导电橡胶--提供优秀的耐磨性

工作压力:

恒定压力

10Bar(150PSI)

适用温度范围:

-30° C(-22° F)到 +80° C(+176° F)

Applications:

Designed to convey abrasives, sand and shot blast material.

Cover:

Black conductive SBR/NR blend-abrasion and ozone resistant-pin pricked.

Reinforcement:

High tensile textile cords-2-ply construction.

Tube:

Black static conducting NR-offering excellent abrasion resistance.

Working Pressure:

Constant Pressure-10 Bar (150 PSI)

Temperature Range:

-22° F (-30° C) to 176° F (+80° C)

规格 Specifications

系列 Series	ID 内径 (in.)	ID 内径 (mm)	OD外径 (in.)	OD外径 (mm)	Tube Thickness 壁厚 (mm)	Max Rec.WP (PSI) 最大工作压力	Weight 重量 (kg/m)
LT1301-050	1/2	13	1.06	27	0.212	150	0.51
LT1301-125	1 1/4	32	1.89	48	0.240	150	1.15

注意: 误差请根据RMA-Class 311-A标准

NOTE: Tolerances according to RMA Class 311-A

喷射数据指南 Blasting Data Guide

使用适当的喷嘴尺寸用于相应的软管内径, 则可以防止过早的软管磨损。(见下面图表)

Premature hose wear can be prevented if the proper nozzle size is used for the corresponding hose ID size. (See chart below)

系列 Series	UB8	UB7	UB6	UB5	UB4
NOZZLE SIZE	1/2	7/16	3/8	5/16	1/4
CFM @ 100 PSI	350	260	200	150	90
AIR HOSE	2	1 1/2	1 1/2	1 1/4	1 1/4
S.B. HOSE SIZE	1 1/2	1 1/2	1 1/4	1 1/4	1
MAT. LB/HR	2250	1750	1260	900	540

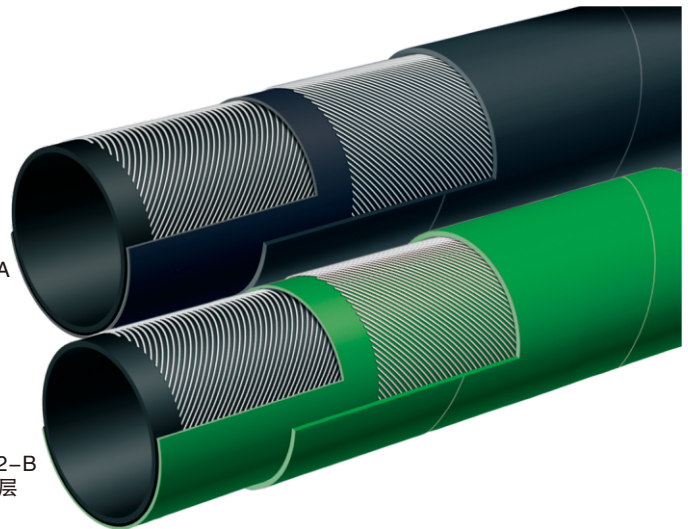
物料管 Material Handling

LT1302-A/LT1302-B 150PSI双层磨砂材料喷射管

150 PSI 4-Ply Abrasive Material Blast Hose

LT1202-A
黑色外层

LT1202-B
绿色外层



应用范围:

设计用来输送磨料、喷砂和喷丸材料。

外层:

黑色或绿色SBR/NR混合传导橡胶，耐磨，抗氧化，针孔设计。

加强层:

高张力纺织线绳--四层结构

内层:

黑色导电自然橡胶--提供优秀的耐磨性

工作压力:

恒定压力

10Bar(150PSI)

适用温度范围:

-30° C(-22° F)到 +80° C(+176° F)

Applications:

Designed to convey abrasives, sand and shot blast material.

Cover:

Black or green, conductive SBR/NR blend--abrasion and ozone resistant--pin pricked.

Reinforcement:

High tensile textile cords--4-ply construction.

Tube:

Black static conducting natural rubber--offering excellent abrasion resistance.

Working Pressure:

Constant Pressure--10 Bar (150 PSI)

Temperature Range:

-22° F(-30° C) to 176° F(+80° C)

规格 Specifications							
系列 Series	ID 内径 (in.)	ID 内径 (mm)	OD 外径 (in.)	OD 外径 (mm)	Tube Thickness 壁厚 (mm)	Max Rec.WP (PSI) 最大工作压力	Weight 重量 (kg/m)
LT1302A/B-075	3/4	19	1.50	38	0.236	150	1.01
LT1302A/B-100	1	25	1.89	48	0.283	150	1.55
LT1302A/B-125	1 1/4	32	2.17	55	0.283	150	1.83
LT1302A/B-150	1 1/2	38	2.36	60	0.260	150	2.08
LT1302A-200	2	51	2.87	73	0.260	150	2.63

注意：误差请根据RMA-Class 311-A标准

NOTE: Tolerances according to RMA Class 311-A

HOSE ID (in.) 管内径	HOSE ENDS 管末端	NOZZLE HOLDERS 喷嘴座	THREADED FEMALE ADAPTER 内螺纹接头	GASKETS 垫圈
3/4	Q-1AL, Q-1BR, Q-1PI	NH-1AL, NH-1BR	-	SBG
1	Q-2AL, Q-2BR, Q-2PI	NH-2AL, NH-2BR	-	SBG
1 1/4	Q-3AL, Q-3BR, Q-3PI	NH-3AL, NH-3BR	SB-1AL, SB-1BR	SBG
1 1/2	Q-4AL, Q-4BR, Q-4PI	NH-4AL, NH-4BR	SB-2AL, SB-2BR	SBG

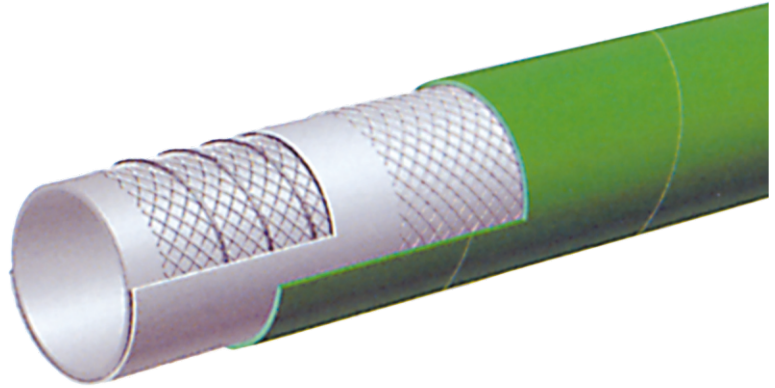
FDA物料管

FDA Material Handling

LT1303

散食吸排管—FDA

Bulk Food S & D Hose – FDA



应用范围:

湿或干磨料的抽吸和排放。适用于谷物，面粉，和球状食品的转移。

外层:

绿色SBR/EPDM混合橡胶，耐磨，耐腐蚀。

加强层:

高张力缠绕纺织线绳和高灵活性螺旋钢线及导电导线

内层:

3/16白色NR橡胶—耐腐蚀

工作压力:

恒定压力

10 Bar (150 PSI) for 2", 3", 4"

5 Bar (75 PSI) for 5", 6", 8"

适用温度范围:

-30° C (-22° F) 到 +80° C (+176° F)

Applications:

Suction and discharge of wet or dry abrasive materials. Designed for grains, flour and pellet transfer.

Cover:

Green SBR/EPDM blend—abrasion and ozone resistant.

Reinforcement:

Spiralled high tensile textile cords, with 4 highly flexible steel helix wires and static wire.

Tube:

3/16" white NR—abrasion resistant.

Working Pressure:

Constant Pressure—

10 Bar (150 PSI) for 2", 3", 4"

5 Bar (75 PSI) for 5", 6", 8"

Temperature Range:

-22° F (-30° C) to 176° F (+80° C)

规格 Specifications

系列 Series	ID 内径 (in.)	ID 内径 (mm)	OD 外径 (in.)	OD 外径 (mm)	Max Rec.WP (PSI) 最大工作压力	Vacuum HG 真空度 (in.)	Min.B.R 最小弯曲半径	Weight 重量 (kg/m)
LT1303-200	2	51	2.64	67	150	30	6	1.83
LT1303-300	3	76	3.62	92	150	27	9	2.84
LT1303-400	4	102	4.65	118	150	27	12	3.91
LT1303-500	5	127	5.71	145	75	24	20	5.67
LT1303-600	6	152	6.69	170	75	24	24	7.02
LT1303-800	8	203	8.78	223	75	21	32	10.43

请注意：适当的静电接地线会延长软管寿命。

★ Please note: Proper grounding of static wire will prolong tube life.

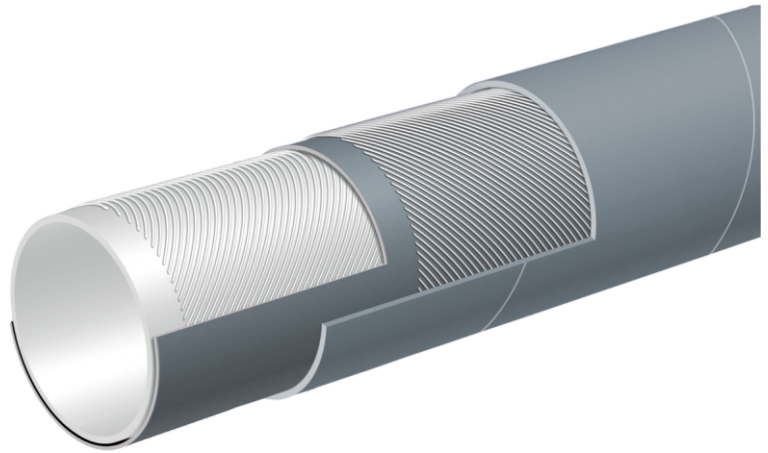
FDA物料管

FDA Material Handling

LT1304

75PSI干散食排放管—FDA等级

75 PSI Dry Bulk Food Discharge Hose – FDA Grade



应用范围:

排放或运输干散粮产品

外层:

灰色SBR/EPDM橡胶, 耐磨, 抗氧化。

加强层:

高张力缠绕纺织线绳和导电线

内层:

3/16白色NR橡胶—耐腐蚀

工作压力:

恒定压力

5 Bar (75 PSI)

适用温度范围:

-30° C (-22° F) 到 +80° C (+176° F)

Applications:

Discharge or delivery of dry bulk food products.

Cover:

Grey SBR/EPDM—abrasion and ozone resistant.

Reinforcement:

Spiralled high tensile textile cords and static wire.

Tube:

3/16" white NR—abrasion resistant.

Working Pressure:

Constant Pressure—5 Bar (75 PSI)

Temperature Range:

-22° F (-30° C) to 176° F (+80° C)

规格 Specifications						
系列 Series	ID 内径 (in.)	ID 内径 (mm)	OD 外径 (in.)	OD 外径 (mm)	Max Rec.WP (PSI) 最大工作压力	Weight 重量 (kg/m)
LT1304-400	4	102	4.65	118	75	4.69

请注意: 适当的静电接地线会延长软管寿命。

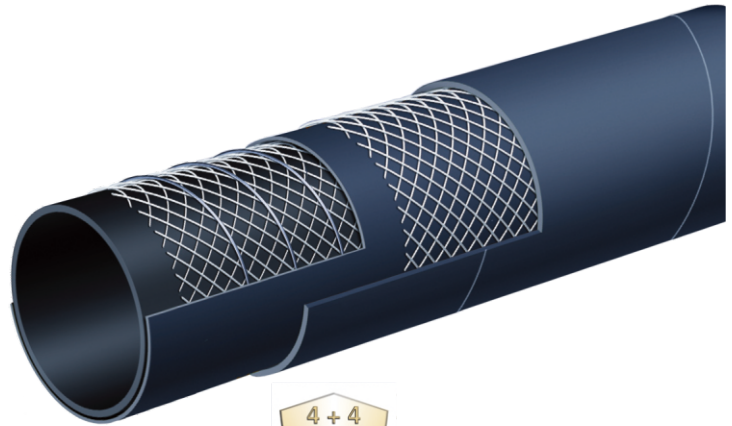
★ Please note: Proper grounding of static wire will prolong tube life.

物料管 Material Handling

LT1305

散装材料吸排管

Bulk Material S & D Hose



应用范围:

湿或干磨料的抽吸和排放，为谷物和干水泥设计。

外层:

黑色SBR/NR混合传导橡胶，耐磨，耐氧化。

加强层:

高张力缠绕纺织线绳和高灵活度螺旋钢线及导电线

内层:

3/16黑色NR橡胶-耐腐蚀

工作压力:

恒定压力

10 Bar (150 PSI) for 2", 3", 4"

5 Bar (75 PSI) for 5", 6"

适用温度范围:

-30° C(-22° F)到 +80° C(+176° F)

Applications:

Suction and discharge of wet or dry abrasive materials.

Designed for grains and dry cement.

Cover:

Black conductive SBR/NR blend—abrasion and ozone resistant.

Reinforcement:

Spiralled high tensile textile cords, with 4 highly flexible steel helix wires and static wire.

Tube:

3/16" black conductive NR—abrasion resistant.

Working Pressure:

Constant Pressure—

10 Bar (150 PSI) for 2", 3", 4"

5 Bar (75 PSI) for 5", 6"

Temperature Range:

-22° F(-30° C) to 176° F(+80° C)

规格 Specifications

系列 Series	ID 内径 (in.)	ID 内径 (mm)	OD 外径 (in.)	OD 外径 (mm)	Max Rec.WP (PSI) 最大工作压力	Vacuum HG 真空度 (in.)	Min.B.R 最小弯曲半径	Weight 重量 (kg/m)
LT1305-200	2	51	2.56	65	150	30	6	1.44
LT1305-300	3	76	3.54	90	150	27	9	2.29
LT1305-400	4	102	4.57	116	150	27	12	3.20
LT1305-500	5	127	5.63	143	75	24	20	4.76
LT1305-600	6	152	6.61	168	75	24	24	5.97

请注意：适当的静电接地线会延长软管寿命。

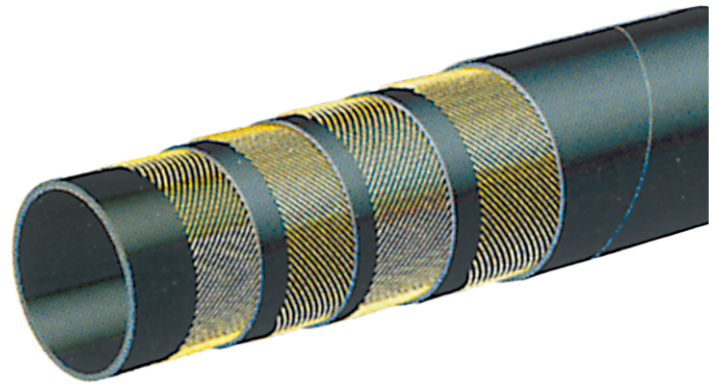
★ Please note: Proper grounding of static wire will prolong tube life.

物料管 Material Handling

LT1306

1275PSI 高性能钢钢筋混凝土泵软管

1275 PSI High Performance Steel – Reinforced Concrete Pumping Hose



应用范围:

钢筋混凝土泵软管，特殊的易操作设计，适用于混凝土浇筑现场。

外层:

黑色SBR/NR混合传导橡胶，耐磨，耐氧化。

加强层:

高张力钢丝编织层

内层:

黑色NR传导橡胶-耐磨

工作压力:

恒定压力

85 Bar (1275 PSI)

适用温度范围:

-30° C(-22° F)到 +80° C(+176° F)

Applications:

Steel-reinforced concrete pumping hose—Special easyhandling construction for concrete placement at casting site.

Cover:

Black conductive SBR/NR blend—abrasion and ozone resistant.

Reinforcement:

High tensile steel cords.

Tube:

Black conductive NR—abrasion resistant.

Working Pressure:

Working Pressure—85 Bar (1275 PSI)

Temperature Range:

-22° F (-30° C) to 176° F (+80° C)

规格 Specifications								
系列 Series	ID 内径 (in.)	ID 内径 (mm)	OD 外径 (in.)	OD 外径 (mm)	Wall Thickness 壁厚 (mm)	Max Rec.WP (PSI) 最大工作压力	Min.B.R 最小弯曲半径	Weight 重量 (kg/m)
LT1306-200	2	51	2.72	69	9	1275	10	2.14
LT1306-250	2 1/2	63	3.35	85	11	1275	10 1/2	3.35
LT1306-300	3	76	3.94	100	12	1275	15	4.55
LT1306-400	4	102	5.04	128	13	1275	20	7.02
LT1306-500	5	127	6.10	155	14	1275	25	10.34

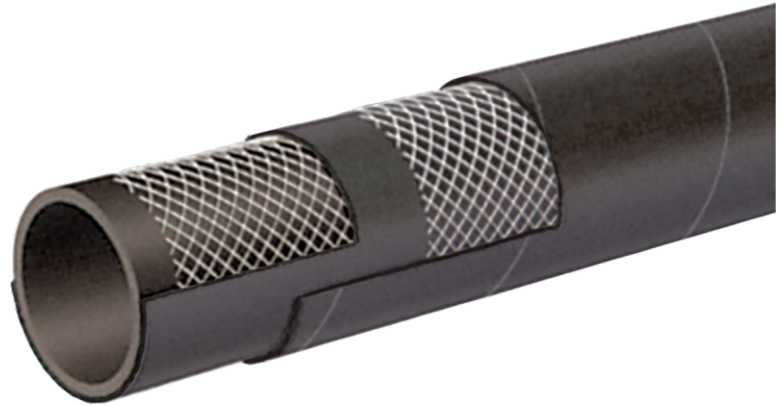
物料管 Material Handling

LT1307-A/LT1307-B

600PSI 石膏混凝土管

(LT737AA系列仅限3英寸内径)

600 PSI Plaster & Concrete Hose
(Series T737AA for 3" ID)



应用范围:

专为用泵传送石膏, 水泥浆, 湿水泥设计。

外层:

黑色SBR/NR混合传导橡胶, 耐磨, 耐氧化。

加强层:

高张力纺织线绳

内层:

黑色NR传导橡胶-耐磨

工作压力:

恒定压力

40 Bar (600 PSI)

适用温度范围:

-30° C (-22° F) 到 +80° C (+176° F)

Applications:

Designed for pumping plaster, grout, and wet cement to placement sites.

Cover:

Black conductive SBR/NR—abrasion and ozone resistant.

Reinforcement:

High tensile textile cords.

Tube:

Black conductive NR—abrasion resistant.

Working Pressure:

Constant Pressure—40 Bar (600 PSI)

Temperature Range:

-22° F (-30° C) to 176° F (+80° C)

规格 Specifications						
系列 Series	ID 内径 (in.)	ID 内径 (mm)	OD 外径 (in.)	OD 外径 (mm)	Max Rec.WP (PSI) 最大工作压力	Weight 重量 (kg/m)
LT1307A-150	1 1/2	38	2.13	54	600	1.22
LT1307A-200	2	51	2.64	67	600	1.62
LT1307A-300	3	76	4.09	104	600	4.40

物料管 Material Handling

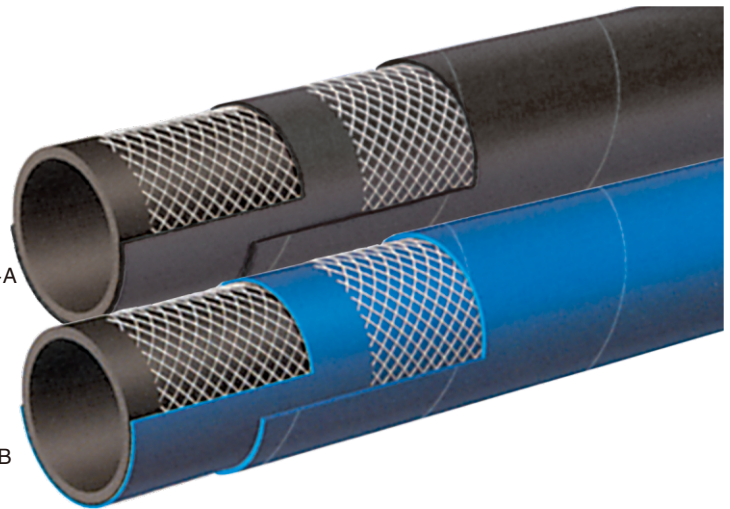
LT1308-A/LT1308-B

800PSI 石膏水泥浆混凝土管

800 PSI Plaster, Grout & Concrete Hose

LT1208-A
黑色外层

LT1208-B
蓝色外层



应用范围:

专为在额定压力下用泵传送石膏, 水泥浆, 湿水泥设计。

外层:

黑色SBR/NR橡胶

蓝色SBR/EPDM橡胶

加强层:

高张力缠绕纺织线绳

内层:

黑色NR传导橡胶-耐磨

工作压力:

恒定压力

55Bar (800 PSI)

适用温度范围:

-30° C (-22° F) 到 +80° C (+176° F)

Applications:

Designed for pumping plaster, grout, wet cement to construction placement sites at rated pressures.

Cover:

Black SBR/NR.

Blue SBR/EPDM.

Reinforcement:

Spiralled high tensile textile cords.

Tube:

Black conductive NR-abrasion-resistant.

Working Pressure:

Constant Pressure-55 Bar (800 PSI)

Temperature Range:

-22° F (-30° C) to 176° F (+80° C)

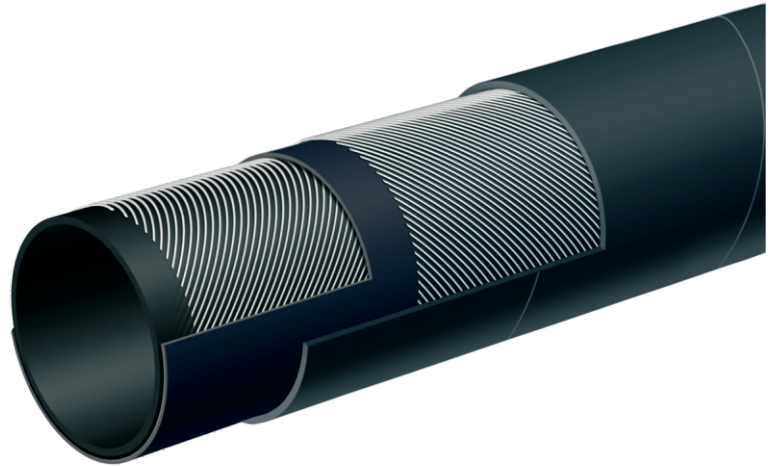
规格 Specifications						
系列 Series	ID 内径 (in.)	ID 内径 (mm)	OD 外径 (in.)	OD 外径 (mm)	Max Rec.WP (PSI) 最大工作压力	Weight 重量 (kg/m)
LT1308A/B-100	1	25	1.57	40	800	0.89
LT1308A/B-125	1 1/4	32	1.93	49	800	1.26
LT1308A/B-150	1 1/2	38	2.28	58	800	1.71
LT1308A/B-200	2	51	2.80	71	800	2.22

物料管 Material Handling

LT1309

75PSI 轻质干粉输送管

75 PSI Light Weight Dry Powder Delivery Hose



应用范围:

低压下干粉末的排放，如干水泥，谷物和动物饲料转移。

外层:

黑色SBR/NR传导混合橡胶，耐磨，抗氧化

加强层:

高张力缠绕纺织线绳

内层:

黑色3/16"NR导静电橡胶-复合抗磨料切割

工作压力:

恒定压力

5Bar (75PSI)

适用温度范围:

-30° C(-22° F)到 +80° C(+176° F)

Applications:

Discharge of dry powders under low pressure, such as dry cement, grains and animal feed transfer.

Cover:

Black conductive SBR/NR blend—abrasion and ozone resistant.

Reinforcement:

Spiralled high tensile textile cords.

Tube:

3/16" black static conducting NR—compounded to resist cutting by abrasive materials.

Working Pressure:

Constant Pressure—5 Bar (75 PSI)

Temperature Range:

-22° F(-30° C) to 176° F(+80° C)

规格 Specifications

系列 Series	ID 内径 (in.)	ID 内径 (mm)	OD 外径 (in.)	OD 外径 (mm)	Max Rec.WP (PSI) 最大工作压力	Weight 重量 (kg/m)
LT1309-400	4	102	4.53	115	75	2.35
LT1309-450	4 1/2	115	5.00	127	75	2.75

操作中过度弯曲可能会导致过早磨损。

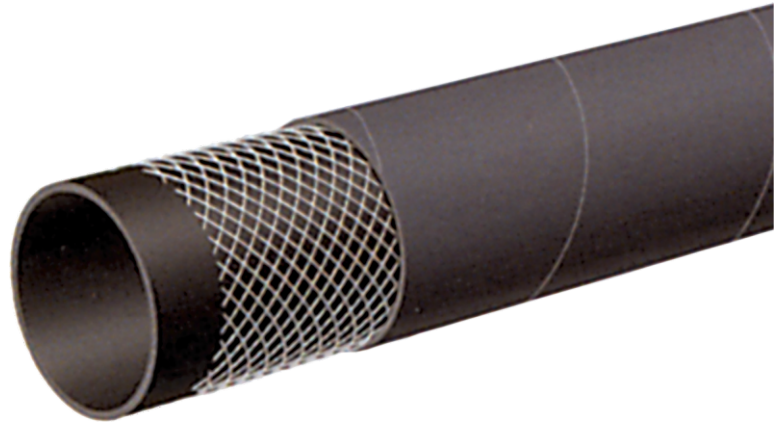
★ Excessive bending during operation may cause premature wear.

物料管 Material Handling

LT1310

75PSI 重型干粉输送管

75 PSI Heavy Weight Dry Powder Delivery Hose



应用范围:

低压下干粉末的排放，气体动力传输干燥物料和研磨泥浆。

外层:

黑色SBR/NR传导混合橡胶-耐磨，耐氧化

加强层:

高张力缠绕纺织线绳

内层:

黑色1/4"NR导静电橡胶-复合抗磨料切割

工作压力:

恒定压力

5Bar (75PSI)

适用温度范围:

-30° C(-22° F)到 +80° C(+176° F)

Applications:

Discharge of dry powders under low pressure.
Pneumatic transfer of dry materials and abrasive slurries.

Cover:

Black conductive SBR/NR blend-abrasion and ozone resistant.

Reinforcement:

Spiralled high tensile textile cords.

Tube:

1/4" black static conducting NR-compounded to resist cutting by abrasive materials.

Working Pressure:

Constant Pressure-5 Bar (75 PSI)

Temperature Range:

-22° F(-30° C) to 176° F(+80° C)

规格 Specifications						
系列 Series	ID 内径 (in.)	ID 内径 (mm)	OD外径 (in.)	OD外径 (mm)	Max Rec.WP (PSI) 最大工作压力	Weight 重量 (kg/m)
LT1310-400	4	102	4.72	120	75	3.18
LT1310-450	4 1/2	115	5.24	133	75	3.42
LT1310-500	5	127	5.71	145	75	3.87

操作中过度弯曲可能会导致过早磨损。

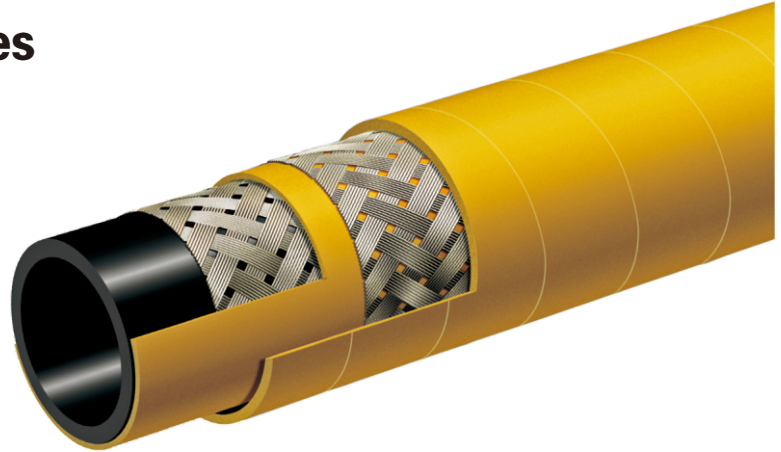
★ Excessive bending during operation may cause premature wear.

专业软管 Specialty Hoses

LT1401

1000PSI 编织MSHA矿用喷雾胶管

1000 PSI Braided MSHA Mine Spray Hose



应用范围:

井下喷水粉尘控制，也可以在连续采矿机械上使用。

外层:

黄色SBR/NBR混合橡胶-耐磨，抗氧化，耐碳氢化合物，耐火--针孔处理

加强层:

高强度钢丝编织层

内层:

黑色SBR/NBR挤出混合橡胶-耐油雾

工作压力:

恒定压力

70Bar (1000PSI)

适用温度范围:

-30° C(-22° F)到 +90° C(+200° F)

Applications:

Underground mine water spray for dust control. Also usable on continuous mining machinery.

Cover:

Yellow SBR/NBR blend-abrasion, ozone, hydrocarbon and fire resistant-pin pricked.

Reinforcement:

High tensile braided steel wire.

Tube:

Black Extruded SBR/NBR blend-oil mist resistant.

Working Pressure:

Constant Pressure-70 BAR (1000 PSI)

Temperature Range:

-22° F (-30° C) to 200° F (+90° C)

规格 Specifications

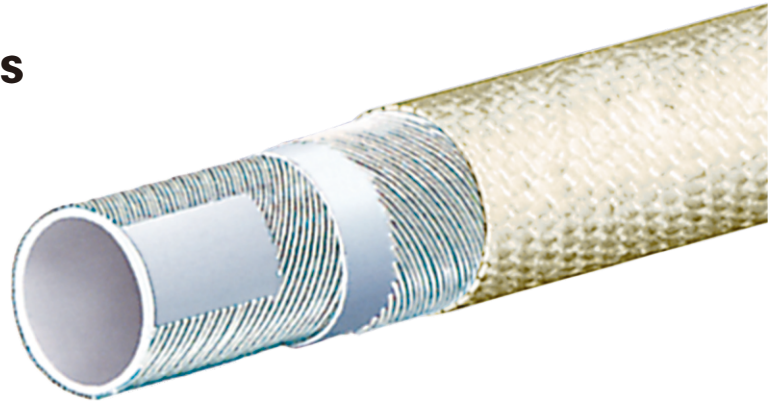
系列 Series	ID 内径 (in.)	ID 内径 (mm)	OD 外径 (in.)	OD 外径 (mm)	Max Rec.WP (PSI) 最大工作压力	Min.B.R 最小弯曲半径	Weight 重量 (kg/m)
LT1401-075	3/4	19	1.10	28	1000	33/4	0.65
LT1401-100	1	25	1.34	34	1000	5	0.86
LT1401-125	1 1/4	32	1.61	41	1000	6 1/4	1.12
LT1401-150	1 1/2	38	1.93	49	1000	7 1/2	1.59
LT1401-200	2	51	2.48	63	1000	10	2.19

专业软管 Specialty Hoses

LT1402

300PSI 炉门冷却液软管

300 PSI Furnace Door Coolant Hose



应用范围:

在钢铁厂, 玻璃厂或铸造厂向炉门输送冷却水, 或在高温且炽热金属或玻璃飞溅的环境。

外层:

米黄色EPDM橡胶-耐热, 非导电无尘玻璃纤维
图层外层

加强层:

高张力纺织线绳

内层:

白色EPDM橡胶

工作压力:

恒定压力

20Bar (300PSI)

适用温度范围:

内层: -40° F (-40° C) to 248° F (+120° C)

外层: -40° F (-40° C) to 1000° F (up to +540° C)

Applications:

To convey cooling water to furnace doors in steel mills, glass plants, foundries, or where the hose is subjected to high temperatures and splashes of white-hot molten metals or glass.

Cover:

Beige EPDM-heat resistant, non-conductive resincoated dust-free fiberglass cover.

Reinforcement:

High tensile textile cords.

Tube:

White EPDM.

Working Pressure:

Constant Pressure-20 BAR (300 PSI)

Temperature Range:

Tube: -40° F (-40° C) to 248° F (+120° C)

Cover: -40° F (-40° C) to 1000° F (up to +540° C)

规格 Specifications						
系列 Series	ID 内径 (in.)	ID 内径 (mm)	OD 外径 (in.)	OD 外径 (mm)	Max Rec.WP (PSI) 最大工作压力	Weight 重量 (kg/m)
LT1402-050	1/2	13	0.98	25	300	0.45
LT1402-175	3/4	19	1.30	33	300	0.71
LT1402-100	1	25	1.54	39	300	0.86
LT1402-125	1 1/4	32	1.89	48	300	1.25
LT1402-150	1 1/2	38	2.13	54	300	1.46
LT1402-200	2	51	2.64	67	300	1.87
LT1402-250	2 1/2	63	3.19	81	300	2.31
LT1402-300	3	76	3.78	96	300	3.20

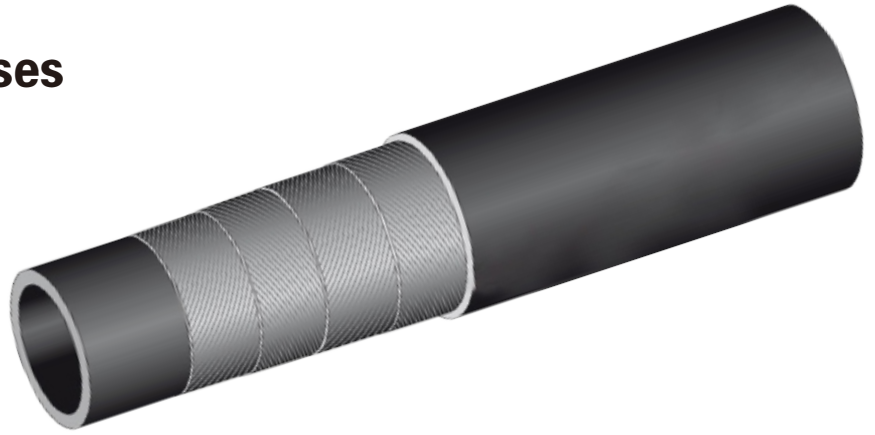
★ Special order, minimums required. Contact your nearest KOA warehouse location for more information.

专业软管 Specialty Hoses

Lt1403

混凝土输送管

Concrete placement hose



应用范围:

钢丝圈软管用于把混凝土输送到浇注位置；
一般用于泵的末端浇筑混凝土，管子可以耐清洗时的负压，通常提供全流通锻造硬化接头。

温度范围:

-40℃至+70℃

商标:

橡胶管表面连续螺旋印刷红色条纹

产品结构:

内胶: 黑色, 光滑, 可耐用混凝土摩擦的NR/SBR
(天然/丁苯) 合成橡胶

增强层: 高强度钢丝层

外胶: 黑色, 光滑(表面布纹), 耐磨和抗老化的NR/SBR(天然/丁苯)合成橡胶

Applications:

steel cord hose used for concrete placement at casting locations;
it is used at the end of the pumps to distribute the concrete .

The hose resists suction during the cleaning process.

Usually supplied with swaged on "Full flow"hardened couplings.

Cover:

black,smooth,NR/SBR rubber,abrasion and weathering resistant.
resistant.

Reinforcement:

plies of steel wire cord.

Tube:black,smooth,NBR/SBR rubber,that withstands the
abrasive action of the concrete.

Temperature Range:

from -40℃ (-40° F) to+70℃ (+158° F)

规格 Specifications

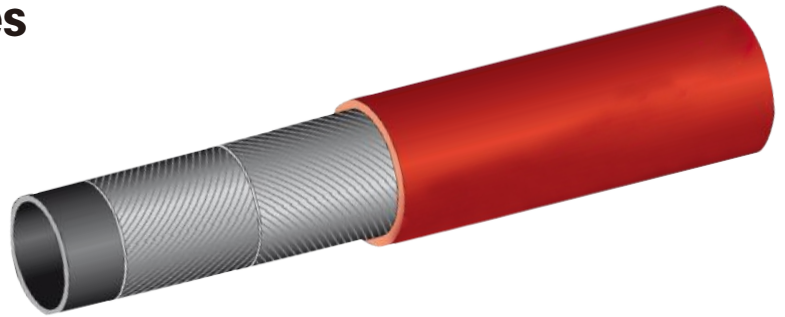
ID 内径 (in.)	ID 内径 (mm)	OD 外径 (in.)	OD 外径 (mm)	工作压力 (Mpa)	爆破压力 (Mpa)	最小弯曲半径 (mm)	Weight 重量 (kg/m)
2	51	2.96	75	8	20	380	3.87
2-9/16	65	3.51	89	8	20	400	4.72
3	76	3.94	100	8	20	400	5.42
3-5/32	80	4.26	108	8	20	450	6.32
3-11/32	85	4.49	114	8	20	500	6.89
3-15/16	100	4.89	124	8	20	550	6.87
3-15/16	100	5.04	128	8	20	550	7.66
4-59/64	125	5.91	150	8	20	700	8.69
4-59/64	125	6.03	153	8	20	700	9.44
6	152	7.25	184	8	17.5	800	14.25

专业软管 Specialty Hoses

Lt1404

210°C蒸汽软管

Steam hose for 210°C



产品特征:

适用标准: BS 5342/85 type 2, class A

应用范围:

刚绳软管在饱和蒸汽状态下的最大工作压力为18bar, 广泛用于化学工业, 石油化工和工业, 不推荐用于蒸汽清洁器, 软管可以用于最高的过热蒸汽为230°C和18bar

注意: 过热蒸汽的使用会影响软管的寿命, 使用后排光积水可以延长软管寿命

产品结构:

内胶: 黑色, 平滑, EPDM三元乙丙橡胶、抗饱和蒸汽

增强层: 高强度钢丝层

外胶: 红色, 针扎, 光滑(表面布纹)。

EPDM三元乙丙橡胶具有优良的耐高温, 耐

候性, 耐磨性和耐老化

适用温度范围: -40°C至+210°C

Applications:

steel cord hose for saturated steam at a maximum working pressure 18bar, used in the chemical industry, petrochemical and industrial applications in general. Not recommended for steam cleaner. The hose can be used for peaks of superheated steam at 230°C and at 18 bar.

Cover:

red, pin, pricked, smooth, EPDM rubber with excellent resistance to high temperatures, weathering, abrasion, and ageing.

Reinforcement:

inserts of steel wire.

Tube:

black, smooth, EPDM rubber, resistant to saturated steam.

Temperature Range:

from -40°C (-40° F) to +210°C (+410° F)

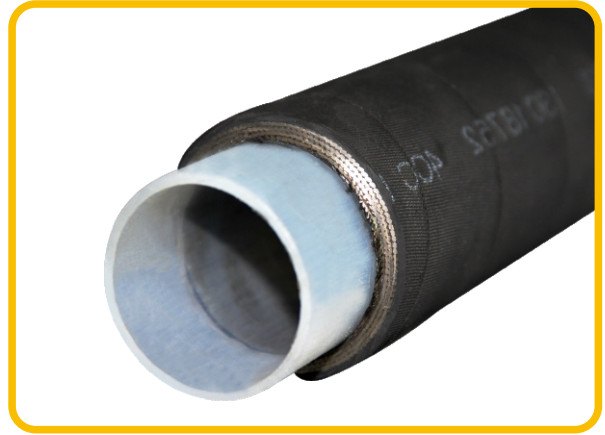
规格 Specifications						
ID 内径 (in.)	ID 内径 (mm)	OD 外径 (in.)	OD 外径 (mm)	工作压力 (Mpa)	爆破压力 (Mpa)	Weight 重量 (kg/m)
1/2	13	1.02	26	1.8	18	0.57
3/4	19	1.26	32	1.8	18	0.74
1	25	1.50	38	1.8	18	0.98
1-1/4	32	1.83	46.5	1.8	18	1.30
1-1/2	38	2.13	54	1.8	18	1.62
2	51	2.64	67	1.8	18	2.31

专业软管 Specialty Hoses

Lt1405

PTFE/HNBR高中低压多功能软管

KING HOSE PTFE/HNBR High and low pressure multifunctional hose



产品结构:

内层:

PTFE、FEP、PFA、HNBR

骨架层:

一层或多层钢丝/纤维增强层

外层:

EPDM、HNBR

性能特点:

耐强酸、强碱、硫化氢、多种有机溶液以及耐氧化剂腐蚀

适用温度范围:

-55℃~+180℃

产品用途:

适用于高腐蚀溶剂、石油、化工、医药、食品、机械等多种领域。

规格参数:

规格 ID	产品压力 (PSI)							
	600	1000	2000	3000	5000	7500	10000	15000
4	✓	✓	✓	✓	✓	✓	✓	✓
6	✓	✓	✓	✓	✓	✓	✓	✓
8	✓	✓	✓	✓	✓	✓	✓	✓
10	✓	✓	✓	✓	✓	✓	✓	✓
13	✓	✓	✓	✓	✓	✓	✓	✓
19	✓	✓	✓	✓	✓	✓	✓	✓
25	✓	✓	✓	✓	✓	✓	✓	✓
32	✓	✓	✓	✓	✓	✓	✓	✓
38	✓	✓	✓	✓	✓	✓	✓	✓
51	✓	✓	✓	✓	✓	✓	✓	✓
64	✓	✓	✓	✓	✓	✓	✓	✓
76	✓	✓	✓	✓	✓	✓	✓	✓
89	✓	✓	✓	✓	✓	✓	✓	
102	✓	✓	✓	✓	✓	✓	✓	
127	✓	✓	✓	✓	✓	✓		
152	✓	✓	✓	✓	✓			

Hose structure

Inner tube: PTFE, FEP, PFA, HNBR

Cover: EPDM, HNBR

Reinforcement:

one or more steel wire or fiber reinforced layer

Features:

Resistant to strong acid, alkali, hydrogen sulfide, variety of organic solutions and oxidant corrosion

Temperature Range: -55℃~180℃

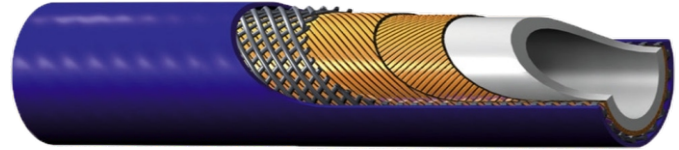
Suitable for petroleum, chemical, pharmaceutical, food, machinery and other fields

专业软管 Specialty Hoses

Lt1406

超高压多功能软管

Ultra high pressure multifunctional hose



产品性能:

压力增强层: 四层高强度拉伸钢丝, 其中包括两个开放缠绕钢丝层

芯管: 聚酰胺

外胶: 聚氨酯

颜色: 黑色

温度范围: -40°C 至 $+100^{\circ}\text{C}$

Applications:

Petroleum, chemical industry, medicine, construction industry, food industry, construction machinery

Features: acid and alkali resistance

Inner tube: NBR, HNBR OR PTFE

Temperature Range: -40°C ~ $+100^{\circ}\text{C}$

规格参数:

规格 Specifications				
ID 内径 (in.)	OD 外径 (mm)	Max Rec.WP (PSI) 最大工作压力	最小爆破压力 (MPA)	Weight 重量 (kg/m)
5/32	12	300	780	0.40
3/16	13	250	625	0.41
3/8	21.6	160	400	0.94
1/2	27	200	500	1.85
3/4	33.7	112	280	1.76

专业软管 Specialty Hoses

Lt1407

API——7K

API 7K Certificated Hose



产品性能:

内层胶: NBR合成胶 (使用期一年)
HNBR (使用期三年)
PFA (使用期五年)

温度范围: -30°C~180°C

执行标准: API Spec 7K

产品用途: 适用于水基泥浆、油基泥
浆、抗硫化氢

Applications:

Suitable for water base mud and oil-based mud, hydrogen sulfide resistant

Inner Tube: NBR, HNBR or PFA

Temperature Range: -30°C~180°C

Standard: API Spec 7k

规格参数:

内径 ID		额定工作压力	试验压力	API等级	外径 OD		参考重量
mm	in	Mpa	Mpa		mm	in	kg/m
51	2	27.6	41.4	C	104	4.1	15
		34.5	51.7	D	104	4.1	15
64	2 1/2	27.6	41.4	C	111	4.4	15
		34.5	51.7	D	111	4.4	15
		51.7	77.6	E	136	5.4	31
76	3	27.6	41.4	C	126	5.0	18
		34.5	51.7	D	126	5.0	18
		51.7	77.6	E	148	5.8	34
89	3 1/2	27.6	41.4	C	140	5.5	21
		34.5	51.7	D	140	5.5	21
		51.7	77.6	E	162	6.4	39
102	4	27.6	41.4	C	161	6.3	30
		34.5	51.7	D	161	6.3	30
		51.7	77.6	E	174	6.9	42
127	5	34.5	51.7	D	213	8.4	67
		51.7	77.6	E	213	8.4	67
152	6	34.5	51.7	D	224	8.8	57
		51.7	77.6	E	248	9.8	93

专业软管 Specialty Hoses

Lt1408

API—16C

API 16C Certificated Hose



应用范围:

适用于油基泥浆、抗硫化氢

内层胶: HNBR (使用期三年)

PFA (使用期五年)

温度范围: -30°C~180°C

执行标准: API Spec 16C

Applications:

Suitable for oil-based mud, hydrogen sulfide resistant

Inner Tube: HNBR

Temperature Range: -30°C~180°C

Standard: API Spec 16C

规格参数:

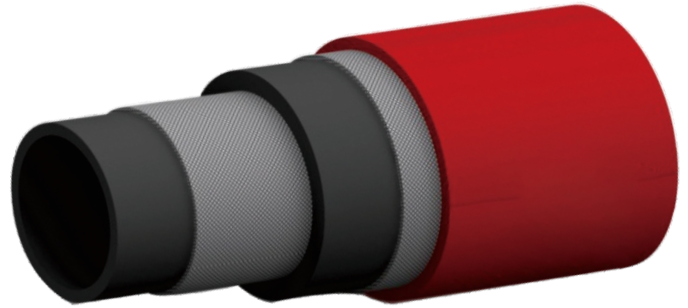
内径 ID		额定工作压力	试验压力	外径 OD		参考重量				
mm	in			mm	in		kg/m			
51	2	34.5	51.7	113	4.5	24				
				123	4.8	28				
				128	5.0	29				
		69	103.5	34.5	51.7	138	5.4	33		
						113	4.5	24		
						123	4.8	28		
				103.5	155.2	69	103.5	128	5.0	29
								138	5.4	33
								136	5.4	40
64	2 1/2					34.5	51.7	146	5.8	45
								150	5.9	46
								162	6.4	53
		69	103.5			69	103.5	127	5.0	28
								137	5.4	32
								141	5.6	34
				76	3	34.5	51.7	151	5.9	38
								127	5.0	28
								137	5.4	32
102	4					34.5	51.7	141	5.6	34
								151	5.9	38
								149	5.9	46
		69	103.5			69	103.5	159	6.3	51
								164	6.5	53
								175	6.9	60
				103.5	155.2	103.5	155.2	141	5.6	32
								151	5.9	37
								155	6.1	39
76	3					34.5	51.7	167	6.6	45
								141	5.6	32
								151	5.9	37
		102	4			34.5	51.7	155	6.1	39
								167	6.6	45
								164	6.5	52
				69	103.5	69	103.5	175	6.9	59
								178	7.0	59
								190	7.5	67
34.5	51.7					34.5	51.7	219	8.6	89
								230	9.1	98
								232	9.1	98
		69	103.5			69	103.5	243	9.6	108
								219	8.6	89
								230	9.1	98
				34.5	51.7	34.5	51.7	232	9.1	98
								243	9.6	108
								243	9.6	108

专业软管 Specialty Hoses

Lt1409

API—BOP

Blow Out Preventer hydraulic Hose



产品性能:

内层胶: NBR合成胶 (使用期一年)

温度范围: -30℃~80℃

执行标准: API Spec 16D

Inner Tube: NBR

Temperature Range: -30℃~80℃

Standard: API Spec 16D

规格参数:

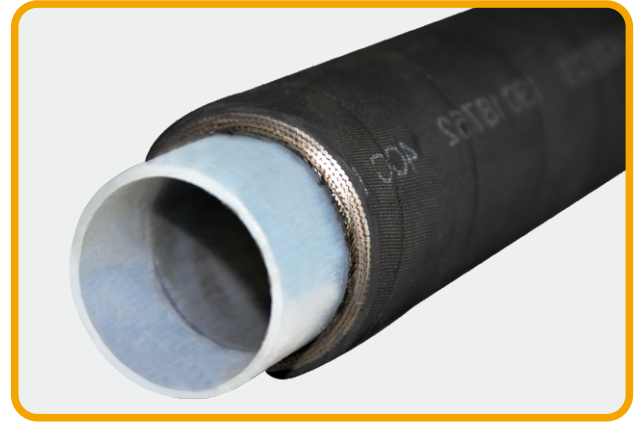
内径 ID		工作压力 Mpa	最小 爆破压力 Mpa	最小 弯曲半径		外径 OD		参考重量 kg/m
mm	in			mm	in	mm	in	
6.5	1/4	34.5	138	110	4.3	20.0	0.8	0.75
9.5	3/8	34.5	138	150	5.9	24.0	0.9	0.80
12.7	1/2	34.5	138	250	9.8	30.0	1.2	1.22
19.1	3/4	34.5	138	330	13.0	37.0	1.5	1.82
25.1	1	34.5	138	375	14.8	44.0	1.7	2.53
31.7	1 1/4	34.5	138	460	18.1	58.0	2.3	4.20
38.1	1 1/2	34.5	138	520	20.5	63.0	2.5	6.29
50.8	2	34.5	138	700	27.6	77.0	3.0	8.90

专业软管 Specialty Hoses

Lt1410

PTFE大口径多功能软管-KING HOSE

PTFE large diameter Multifunctional hose



产品特性:

性能特点: 耐强酸、耐强碱、有机介质

温度范围: -40°C ~ 180°C

Features acid and alkali resistance

Temperature Range -40°C ~ 180°C

规格参数:

规格 ID	软管外径 Nom.OD		最大工作压力 Max.WP	参考重量 Weight	
	In.	mm			In.
2	50.8	2.71	68.9	1.38	2.33
3	76.2	3.71	94.3	1.38	3.32
4	101.6	4.84	122.9	1.38	5.16
6	152.4	7.07	179.5	1.38	9.68
8	203.4	9.08	230.5	1.38	12.64
10	254.0	11.24	285.4	1.38	18.12
12	305.4	13.43	341.0	1.38	24.60

专业软管 Specialty Hoses

Lt1501

橡胶下水道清洗软管

Sewer Cleaning Hoses



产品特征:

温度范围: -40°C 至 +70°C

内胶: SBR 黑色光滑

外胶: 天然橡胶/丁二烯橡胶

颜色: 黑色

软管类型: D

Temperature range: -40° C up to +70° C

Internal lining: SBR, black, smooth

External cover: NR/BR, black, smooth, high abrasion-proof,
weather-resistant NR/ BR, NR/BR

Colour: black

Inlays: textile fabric

规格参数:

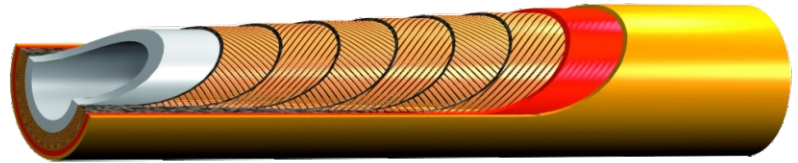
Inner- Ø (mm)	Wall (mm)	Outer- Ø (mm)	WP (bar)	BP (bar)	Bending radius (mm)	Weight (g/m)	Hose length (m)
13	6	25	250	625	65	440	40
13	6	25	250	625	65	440	60
13	6	25	250	625	65	440	80
13	6	25	250	625	65	440	120
19	6	31	250	625	90	555	80
19	6	31	250	625	90	555	120
25	7	39	250	625	100	780	40
25	7	39	250	625	100	780	60
25	7	39	250	625	100	780	80
25	7	39	250	625	100	780	120
25	7	39	250	625	100	780	160
25	7	39	250	625	100	780	180
25	7	39	250	625	100	780	200
32	8	48	250	625	130	1060	40
32	8	48	250	625	130	1060	60
32	8	48	250	625	130	1060	80
32	8	48	250	625	130	1060	120
32	8	48	250	625	130	1060	160
32	8	48	250	625	130	1060	180
32	8	48	250	625	130	1060	200

专业软管 Specialty Hoses

Lt1502

超高压水喷射软管系列

ULTRA-HIGH PRESSURE WATER JETTING HOSE SERIES



应用范围:

建造和造船业 (对于超高压枪 > 300 MPa)

工业清洗 加氢除垢和除去积累的污垢和物质

对于工作压力高达280 MPa (40.600 psi)

技术规格:

芯管: 聚甲醛

压力加强层: 六层最大拉力钢丝缠绕层

外胶: 1: 聚酰胺; 2: 聚氨酯, 耐磨

标准颜色: 1: 红色; 2: 黄色

温度范围: -10° C至+70° C

Applications:

Construction and shipbuilding industry (for very high pressure lances with > 300 MPa)

Industrial cleaning

Hydrodemolition and removal of accumulated dirt and materials

For working pressure up to 280 MPa (40.600 psi)

Technical Specifications:

Core tube: Polyoxymethylene

Pressure reinforcement:

Six spiral layers of maximum tensile steel wire

Cover: 1st: Polyamide; 2nd: Polyurethane, abrasion resistant

Standard colour: 1st: Red; 2nd: Yellow

Temperature range: -10° C up to +70° C

规格 Specifications				
ID 内径 (in.)	OD 外径 (mm)	Max Rec.WP (Mpa) 最大工作压力	最小爆破压力 (MPa)	Weight 重量 (kg/m)
3/16	13	250	625	0.41
3/4	33.7	112	280	1.76
3/8	21.6	160	400	0.94
5/32	12	300	780	0.40
1/2	27	200	500	1.85